



United States
Department of Agriculture

Foreign
Agricultural
Service

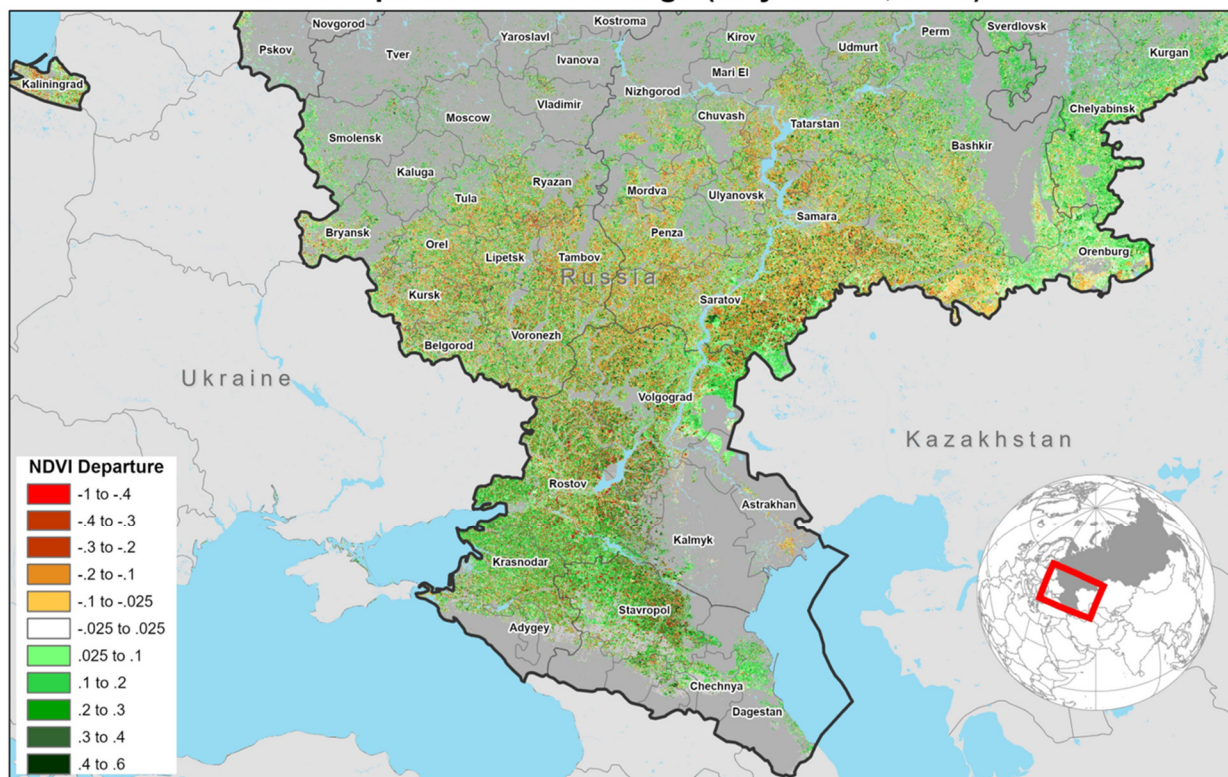
World Agricultural Production

Circular Series
WAP 06-26
June 2026

Russia Wheat: Spring Rains Boost Winter Wheat Prospects yet Hamper Spring Sowing

USDA forecasts Russia wheat production for marketing year 2026/27 at 88.0 million metric tons (mmt), up 2 percent from last month but down 3 percent from last year. The forecast includes 64.0 mmt of winter wheat and 24.0 mmt of spring wheat. USDA crop production forecasts for Russia exclude estimated output from Crimea. Total wheat yield is forecast at 3.41 tons per hectare, up 4 percent from last month, but slightly less than 1 percent from last year. Total harvested area is forecast at 25.8 million hectares (mha), down 2 percent from last month and last year.

European Russia NDVI Departure from Average (May 17 - 24, 2026)



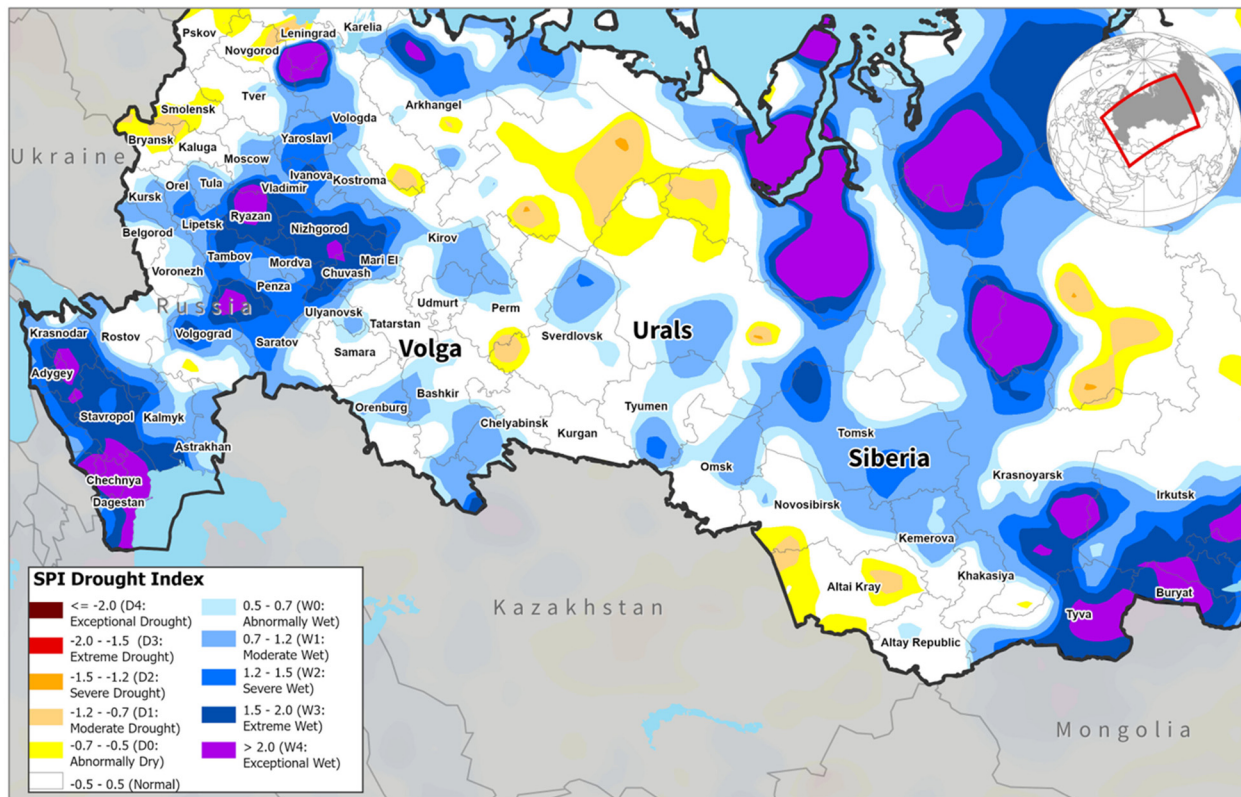
Sources: S-NPP VIIRS; GFSAD 30 m crop cover (2015)

Winter wheat is primarily grown across the European part of Russia and, on average, it accounts for about 70 percent of total production. Precipitation has been predominantly above average since the crop emerged from dormancy. Moderate to heavy May rainfall provided consistent and sufficient moisture for the developing crop. As a result, crop vigor is well above average as captured by the satellite-derived Normalized Difference Vegetation Index. Currently, winter wheat

Approved by the World Agricultural Outlook Board

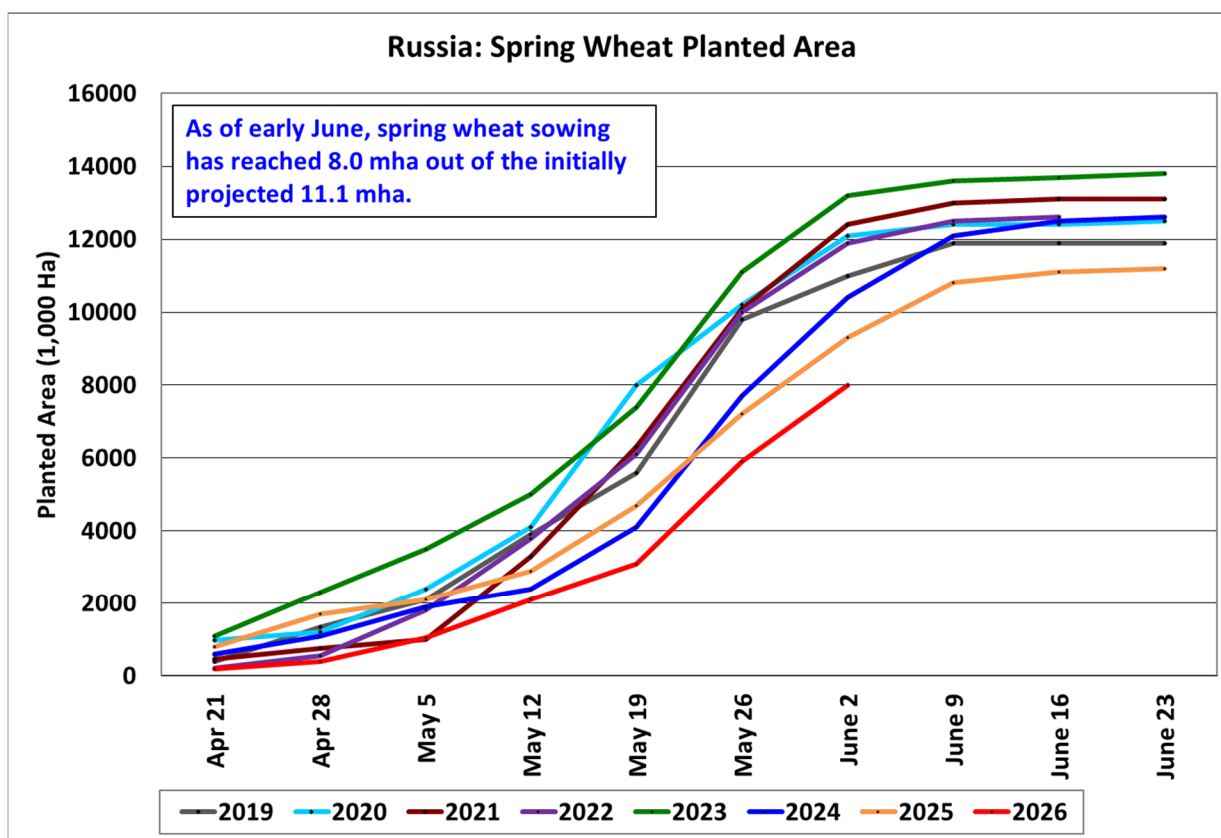
is at the filling stage across southern growing regions. Crops in the Central and the Volga Districts entered the critical yield formation window in early June. Maintaining adequate soil moisture reserves over the next couple of weeks will therefore be essential for the more northern growing areas. Harvest of winter wheat will begin in July.

Russia SPI Drought Index (March 26 - May 25, 2026)



Source: NOAA CPC

The wet spring season, however, has proven challenging for the spring sowing campaign. Based on the Russian Ministry of Agriculture (MinAg), spring wheat has been planted on only 8.0 mha out of the initially projected 11.1 mha as of early June. Based on open-source articles, MinAg has not revised its area forecast for the new spring crop yet. Rather than being delayed, at this stage, the spring sowing campaign for grains is wrapping up as the optimal growing window is narrowing. Thus, farmers are beginning to consider shifting to alternative summer grown crops such as oilseeds or even corn that generally can be planted later than grains.



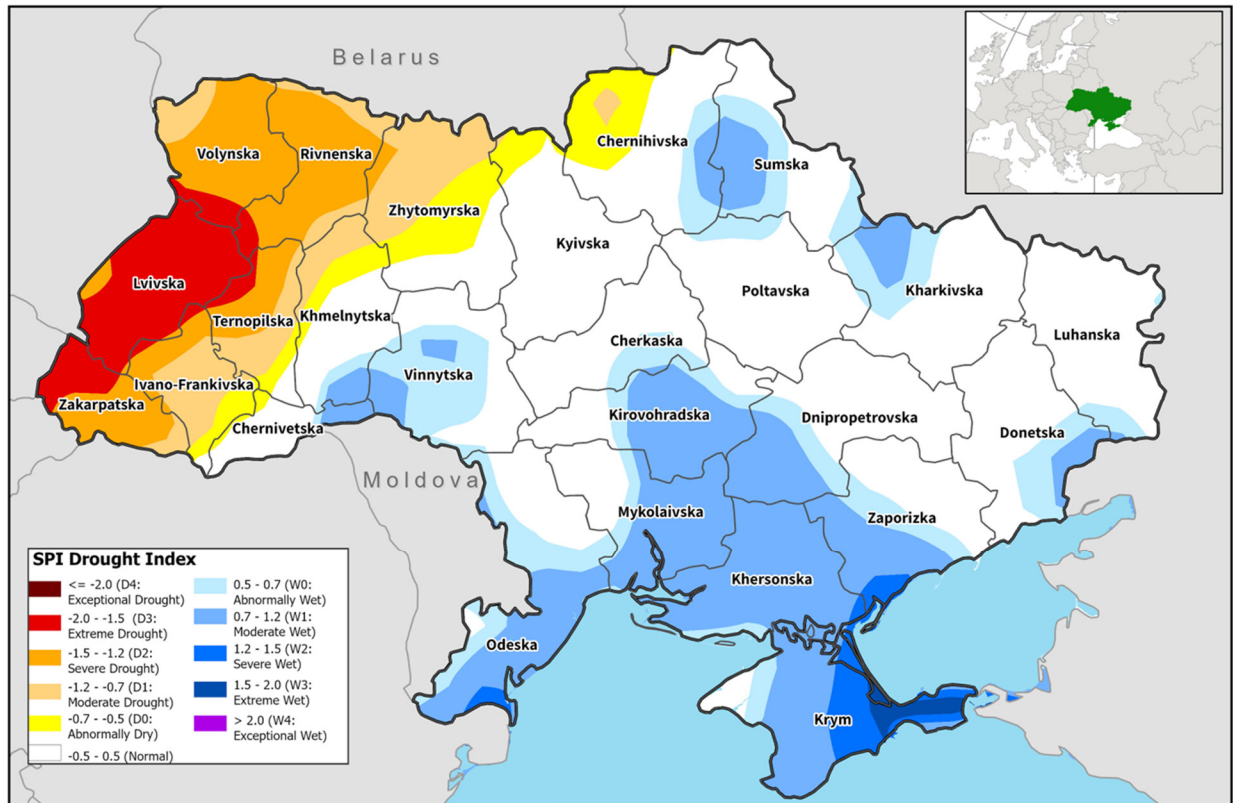
Source: Russian Ministry of Agriculture

Area, yield, and production estimates for Russia winter wheat and spring wheat are available on PSD Online. Select “Downloadable Data Sets” and open the zipped file for “Russia Wheat; Winter/Spring Area & Production” (*For more information, please contact Iliana.Mladenova@usda.gov.*)

Ukraine Wheat: Favorable May Weather Boosts Wheat Prospects

USDA forecasts Ukraine wheat production for marketing year (MY) 2026/27 at 23.5 million metric tons, up 2 percent from last month but down 2 percent from last year. USDA crop production forecasts for Ukraine include estimated output from Crimea. Total wheat yield is forecast at 4.52 tons per hectare, up 2 percent from last month and 6 percent from last year. Total harvested area is forecast at 5.2 million hectares, unchanged from last month and down 8 percent from last year.

Ukraine SPI Drought Index (March 26 - May 25, 2026)



Source: NOAA CPC

At present, Ukraine can be divided into two zones, areas in conflict and areas not in conflict. As elaborated by FAS/Kyiv in Ukraine, due to the ongoing war there is no official and reliable information about the status of Ukraine's agriculture in the conflict zone. As a result, area and production data currently provided by FAS/Kyiv, Ukraine's Ministry of Agriculture (MinAg), and the State Statistical Service of Ukraine, which inform USDA's forecasts, do not reflect the whole country. MinAg also does not include Crimea. USDA crop production estimates for Ukraine include estimated output from Crimea. Crimean area and production numbers are extracted from the agricultural crop reports provided by the Russian Statistical Agency, Rosstat.

Ukraine: NDVI Departure from Average (May 17-24, 2026)



Source: S-NPP VIIRS; GFSAD 30 m crop cover (2015)

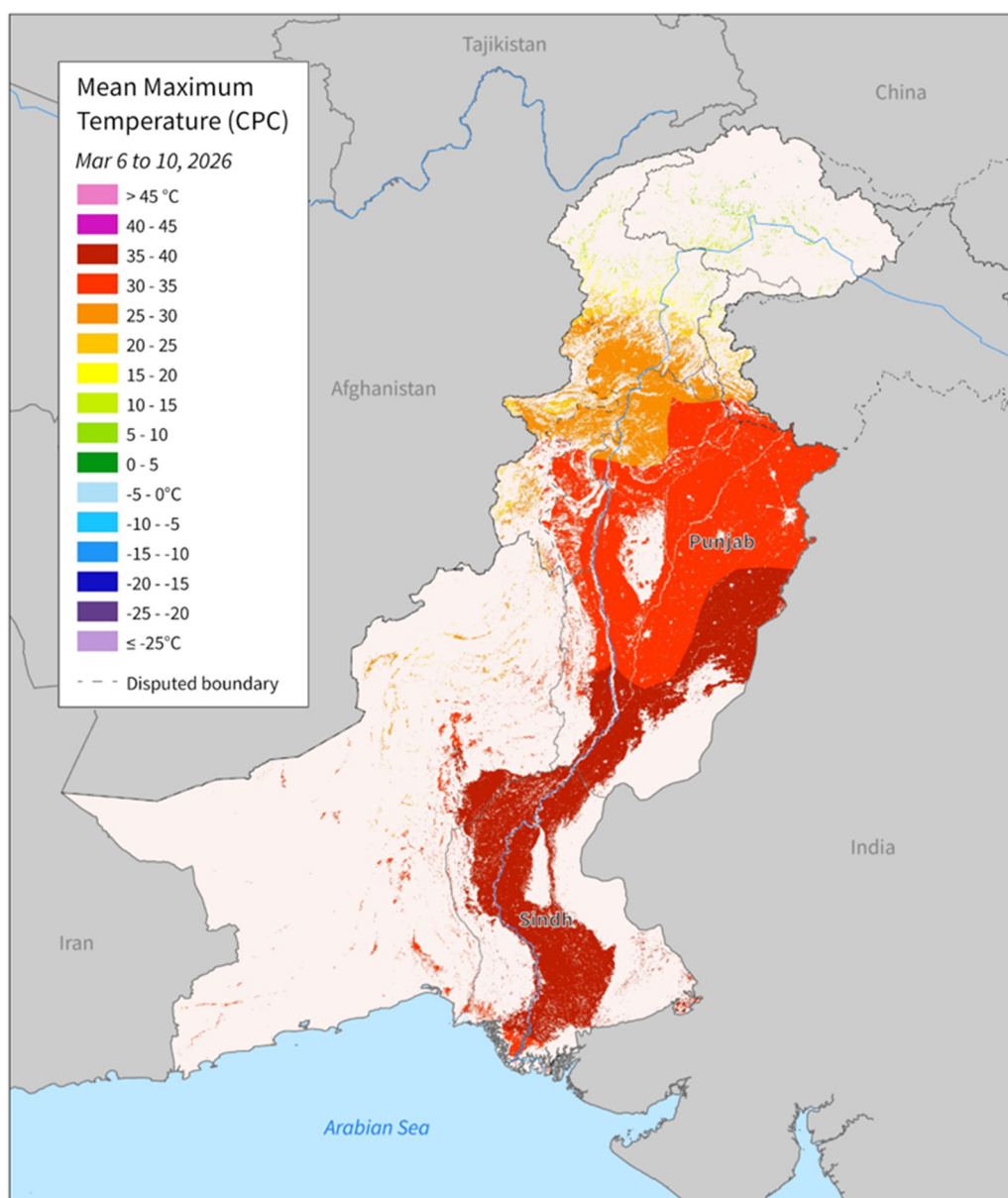
Winter wheat, which accounts for about 97 percent of the total wheat production in Ukraine, is typically planted between early September and mid-November. The crop enters the key yield formation period between early and mid-May and reaches maturity from mid-to-late June. Favorable May rainfall supplied ample soil moisture during the aforementioned critical developmental window, enhancing crop vigor and boosting this season's yields prospects. This month's yield adjustment is based on analysis that utilizes satellite-derived Normalized Difference Vegetation Index (NDVI) data, which clearly illustrates consistent above-average crop conditions across the Steppe and Forest Steppe zones, which are Ukraine's key wheat growing regions. *(For more information, please contact Iliana.Mladenova@usda.gov.)*

Pakistan Wheat: Production Revised Down on Late Season Weather

USDA estimates Pakistan wheat production for marketing year (MY) 2026/27 at 29.0 million metric tons, down 3 percent from last month, but unchanged from last year, and 2 percent above the 5-year average. Harvested area is estimated at 9.4 million hectares, unchanged from last month, but up 3 percent from last year, and 2 percent above the 5-year average. Yield is estimated at 3.09 tons per hectare, down 3 percent from last month and last year, and slightly below the 5-year average.

Pakistan: Average Maximum Temperature (CPC)

March 6 to 10, 2026



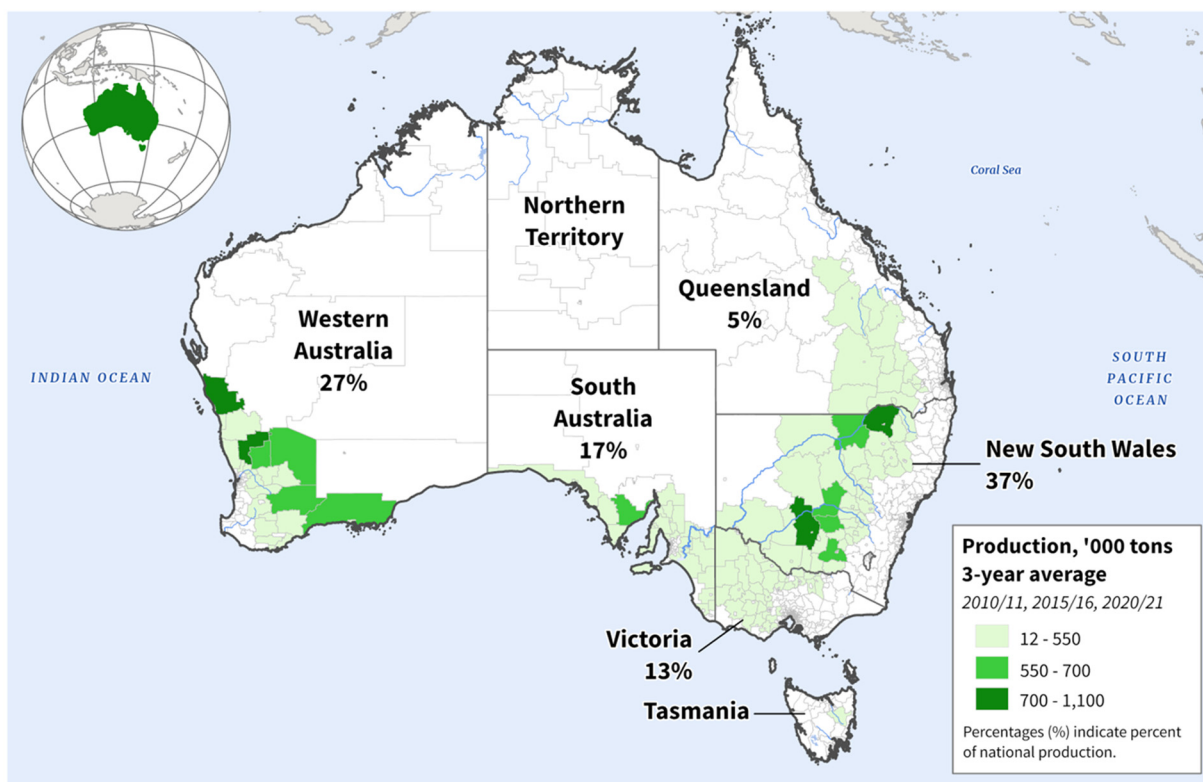
Sources: NOAA CPC; ESA 2018 Crop Mask (250m)

Ideal conditions were observed for most of the MY 2026/27 Pakistan wheat season. Timely receding of the 2025 monsoon offered ample planting time in the fall, and growing season conditions were mostly positive – boosted by abundant irrigation supplies. However, losses due to late season storms and high temperatures diminished the crop. Lodging and hail damage were reported in April, and temperatures in excess of 35 degrees Celsius were observed as the crop reached maturity and during grain fill in March and April. The problems were mostly reported in Punjab, while farms in Sindh fared better due to more abundant irrigation, which helped offset the excessive heat. In response to these late-season factors, government sources reduced production estimates in May. *(For more information, please contact Aaron.Mulhollen@usda.gov.)*

Australia Wheat: Production Forecast Reduced Due to Unfavorable Conditions

USDA forecasts Australia wheat production for marketing year (MY) 2026/27 at 28.0 million metric tons, down 7 percent from last month, 22 percent from last year and 19 percent below the 5-year average. Harvested area is forecast at 11.0 million hectares, down 7 percent from last month, 11 percent from last year and 14 percent below the 5-year average. Yield is forecast at 2.55 metric tons per hectare, up slightly from last month, but down 12 percent from last year and 6 percent below the 5-year average.

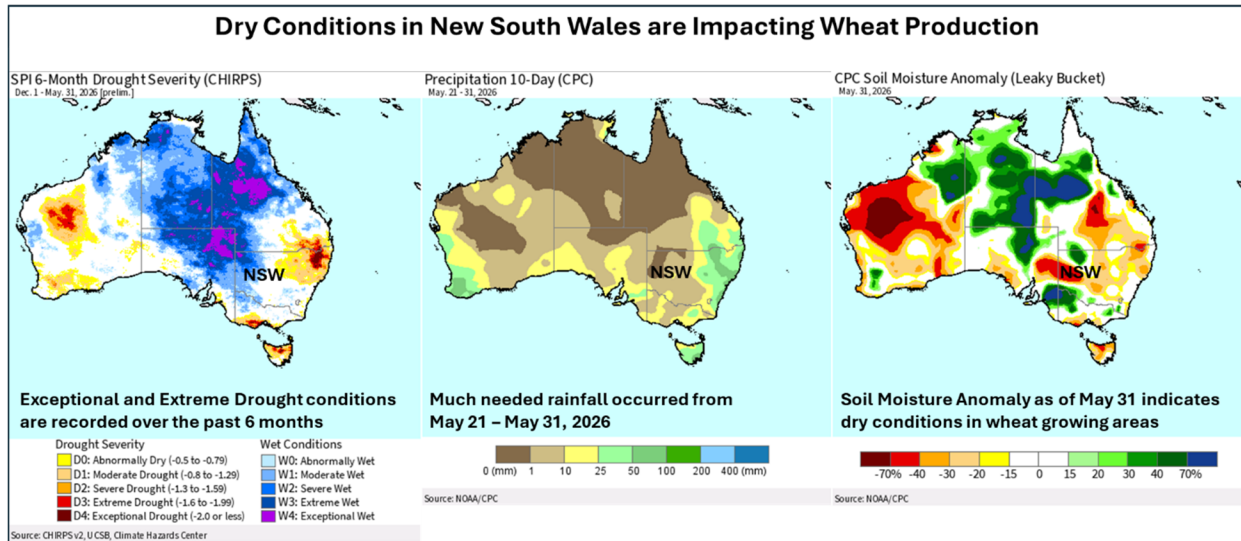
Australia: Wheat Production



Source: Australian Bureau of Statistics, Agricultural Censuses of 2010/11, 2015/16, and 2020/21 (2021 SA2 Boundaries)

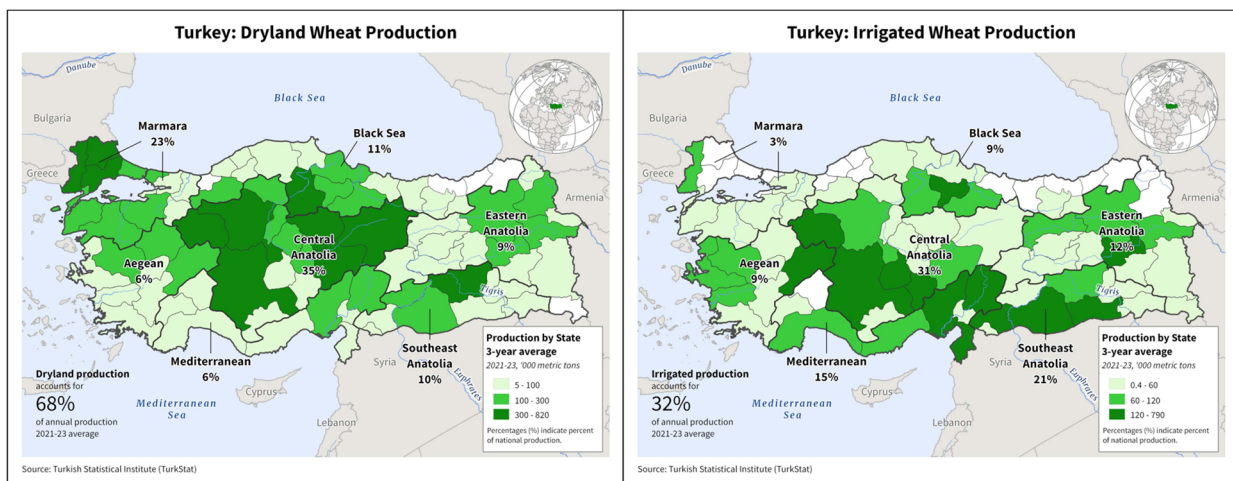
Australia is one of the top ten largest producers of wheat worldwide and the growing season is over the winter months from April through February. Following last season’s strong wheat crop,

which was the third highest production on record, this year is starting out significantly lower than last year and the 5-year average. Although conditions have improved slightly toward the end of May in New South Wales and southern Queensland, the extensive dryness has caused some planting delays and resulted in a reduction in area. As seen in the graphic below, the precipitation that occurred in mid-to-late May was not enough to remedy the low soil moisture conditions, therefore, New South Wales and southern Queensland require more rainfall to help establish newly planted wheat during this critical period.

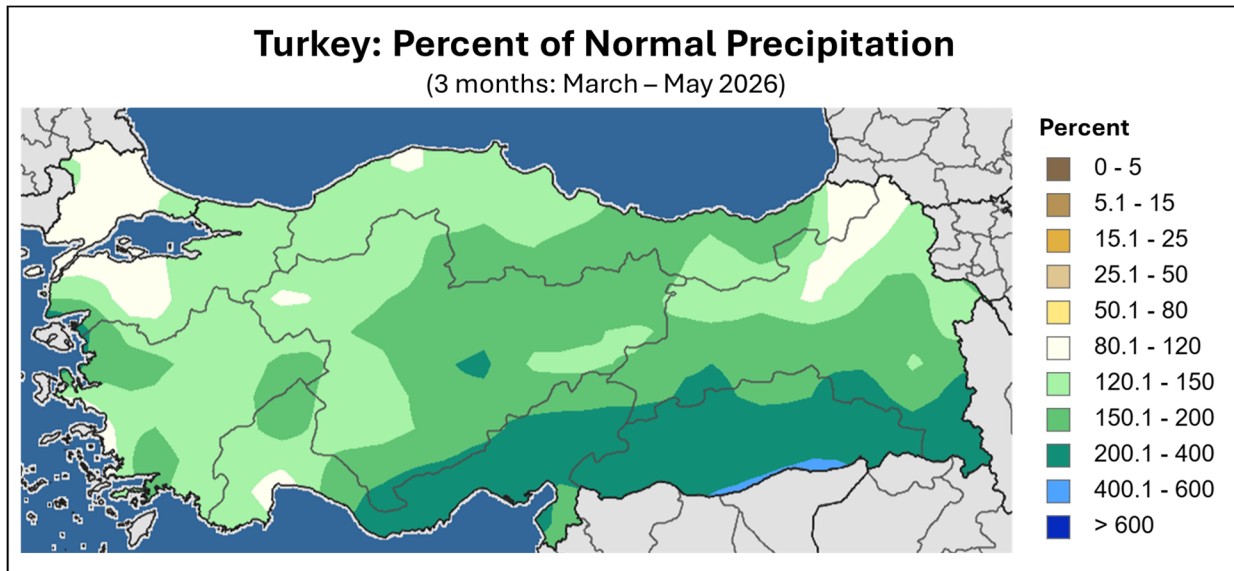


The latest official crop report that was released on June 2, 2026 by the Australian Bureau of Agricultural and Resource Economics and Sciences (ABARES) reported that high input costs as well as low soil moisture levels are expected to significantly reduce the amount of planted area of wheat this season. Therefore, wheat production for MY 2026/27 is forecasted to decline. Planting is currently underway and will continue through June, especially in the more southern regions of the winter grain belt. *(For more information, please contact Shannon.Moyo@usda.gov.)*

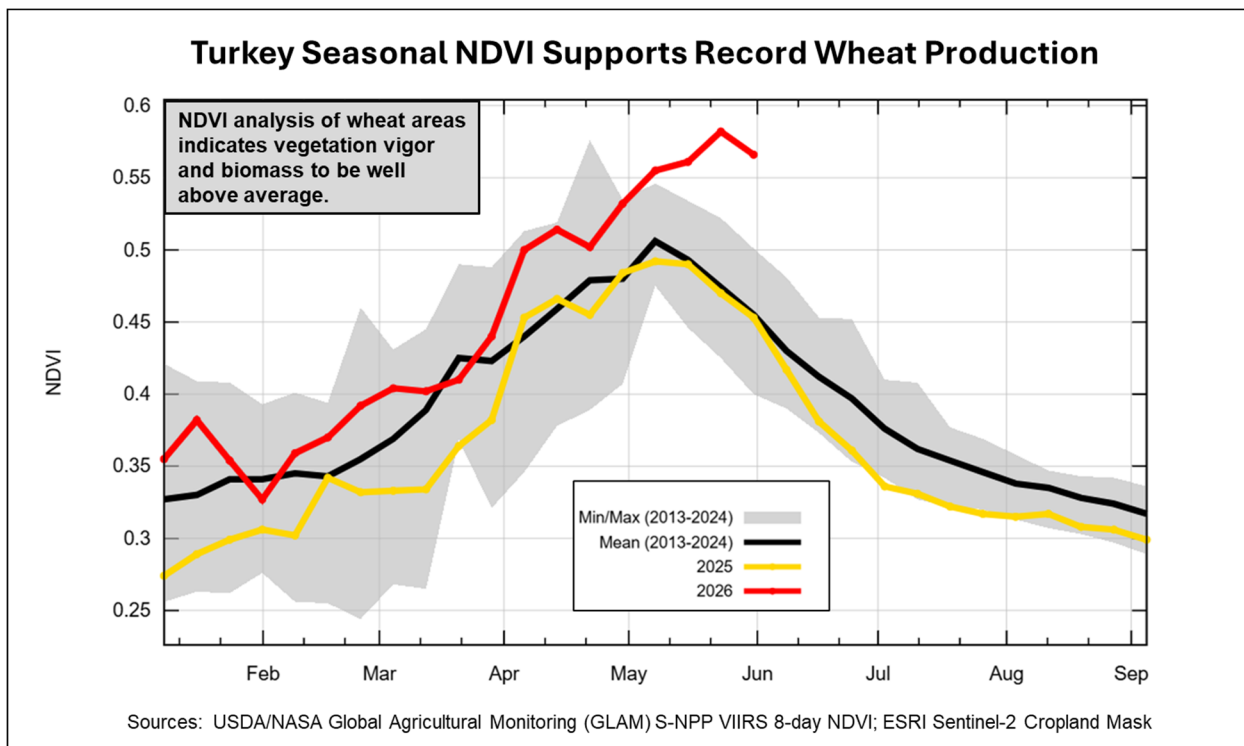
Turkey Wheat: Record Yield and Production Driven by Abundant Rain



USDA forecasts Turkey wheat production for marketing year (MY) 2026/27 at a record 22.5 million metric tons (mmt), up 7 percent from last month, 34 percent above last year's drought-affected season, and 25 percent above the 5-year average. Harvested area is estimated at 7.5 million hectares (mha), unchanged from last month, but up 2 percent from last year. Yield is estimated at a record 3.02 tons per hectare (t/ha), 7 percent above last month, 31 percent above last year, and 19 percent above the 5-year average.



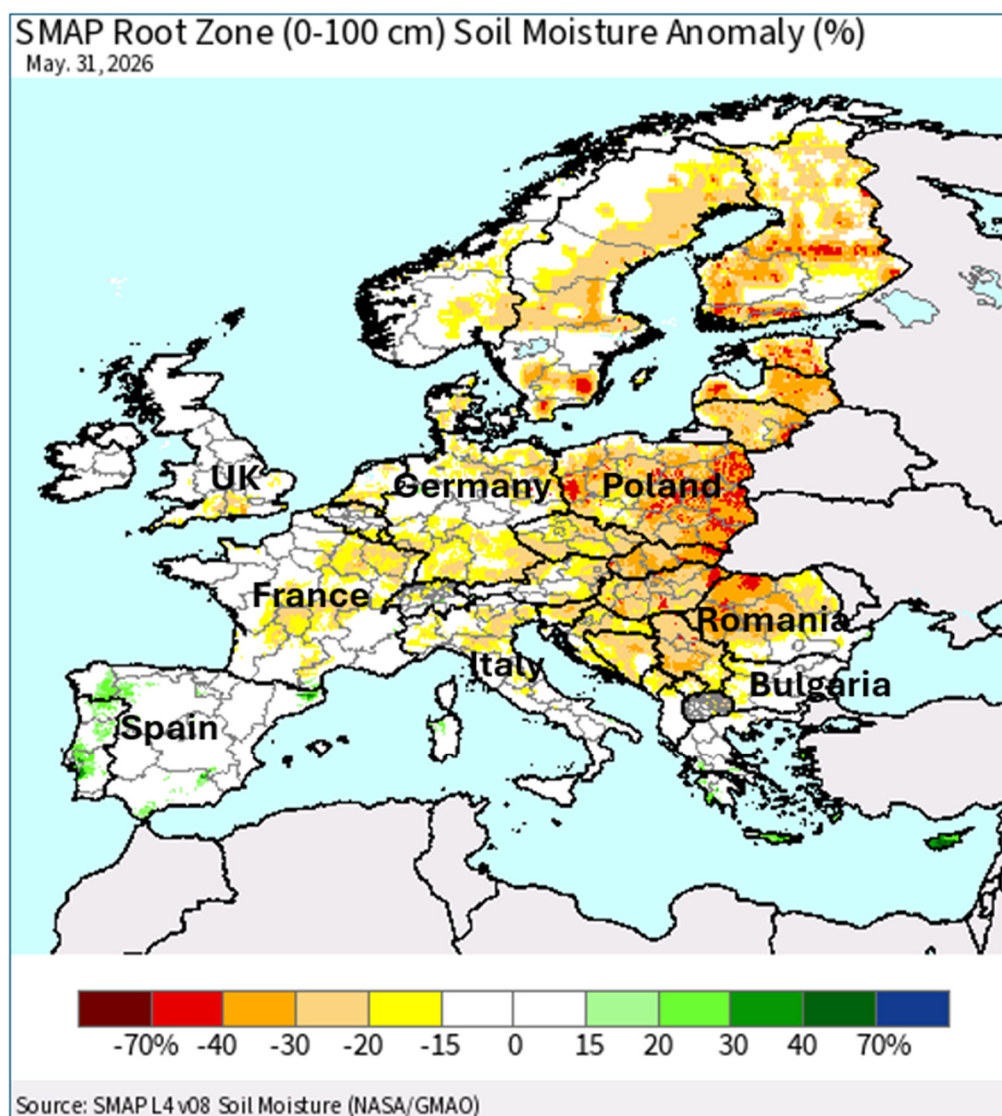
Source: NOAA CPC



Turkey, along with the broader Middle East and North Africa (MENA) region, is expecting significantly improved yields this year. After steep production declines across Turkey and the wider MENA region last year, this season's widespread, drought-breaking rains have reversed the trend, with Turkey's wheat harvest at a record level. Satellite-derived Normalized Difference Vegetation Index (NDVI) analysis depicts record biomass and vigor in the crop regions of Turkey. The wheat harvest occurs during July and August. *(For more information, please contact Bryan.Purcell@usda.gov.)*

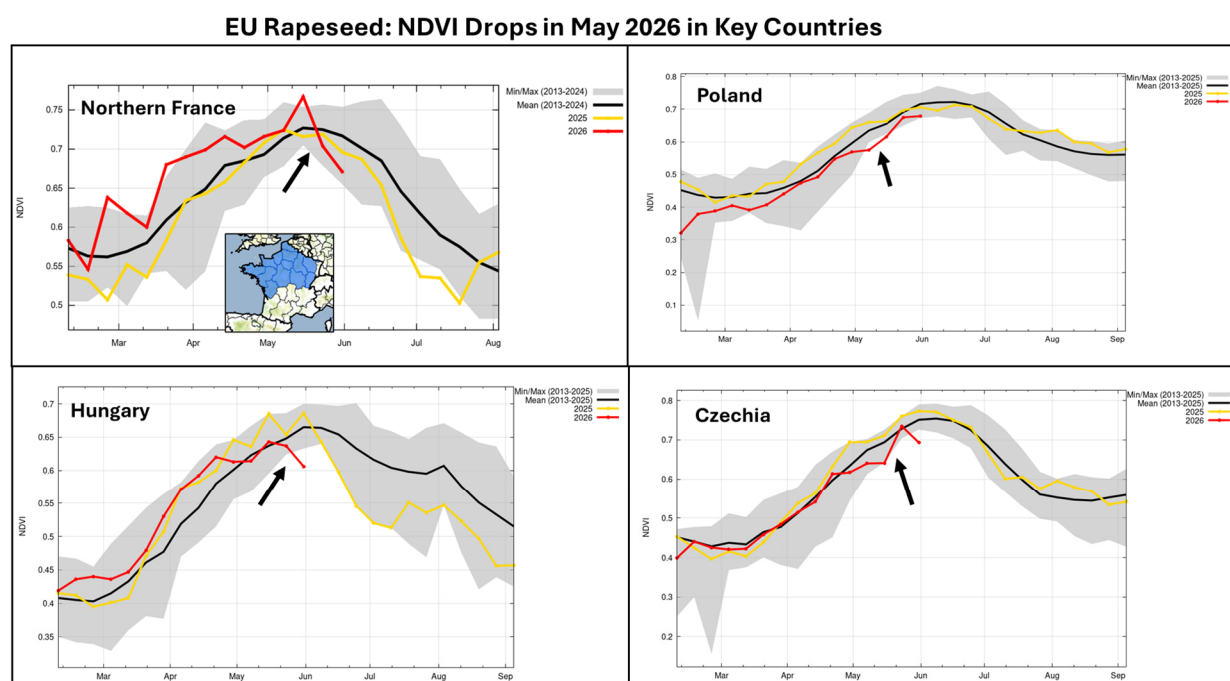
European Union Rapeseed: Strong Harvest Expected, Despite Dry Spell in the East

USDA forecasts European Union (EU) rapeseed production for marketing year 2026/27 at 20.5 million metric tons, down 1 percent from last month, nearly unchanged from last year's bumper crop, and up 8 percent above the 5-year average. Harvested area is forecast at 6.3 million hectares, unchanged from last month, 3 percent above last year, and 7 percent above the 5-year average. Yield is forecast at 3.25 tons per hectare, down 1 percent from last month and 1 percent above the 5-year average of 3.23 t/ha.



Rapeseed is in relatively good condition across the EU. Dryness during March and April depleted soil moisture but precipitation returned in many areas during May. Rainfall in May provided welcome relief, particularly in northeastern countries where dryness was most prevalent and resulted in small yield reductions. Heat during the end of May primarily occurred in southern France and in Spain.

Satellite-derived Normalized Difference Vegetation Index (NDVI), masked for arable crops, shows vegetation vigor in the rapeseed regions to have been at or above average until May. By the end of May, crops in most regions showed minor signs of stress, depicted as a drop in vegetation vigor due to dryness in March and April. Harvest should begin later in June and continue into July.

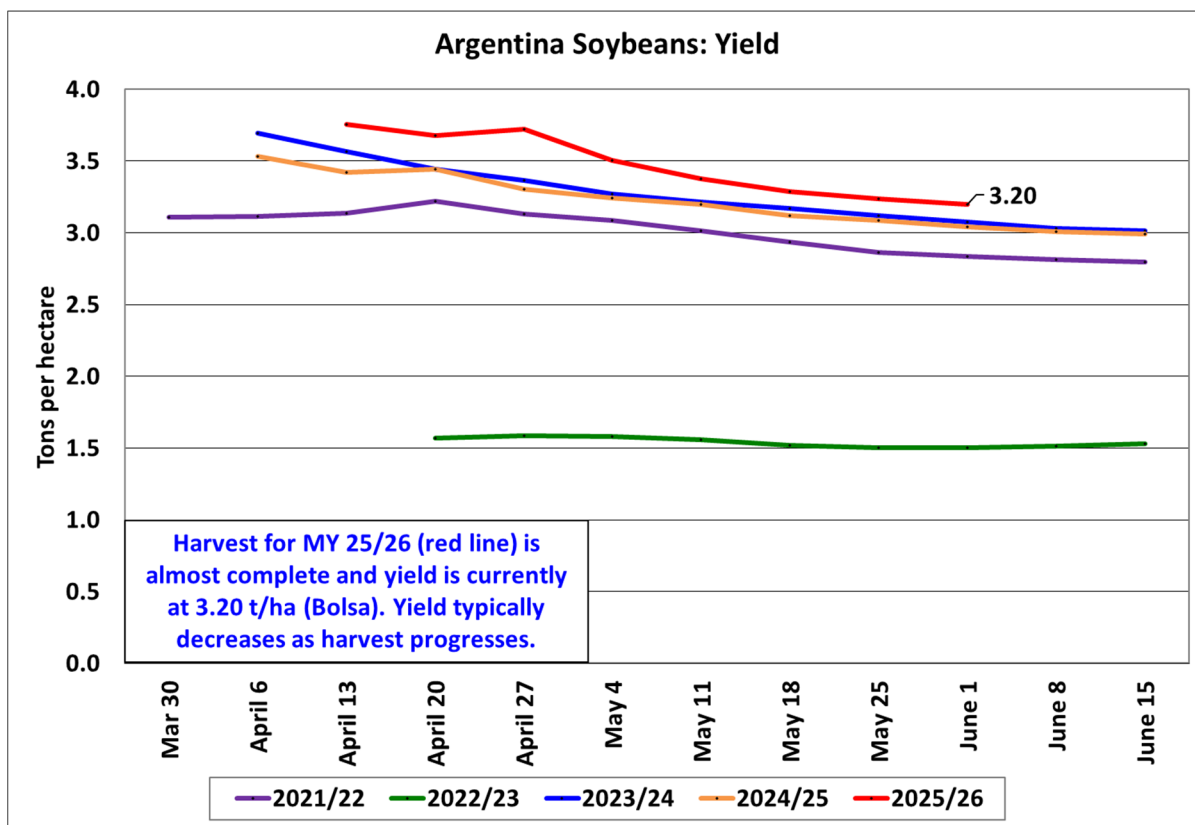


Source: USDA/NASA Global Agricultural Monitoring (GLAM) S-NPP VIIRS 8-day NDVI; Sentinel-2 Cropland Mask

For country-specific area, yield, and production estimates within the European Union (EU), please go to PSD Online at <https://apps.fas.usda.gov/PSDOnline/app/index.html#/app/home>, and select “Downloadable Data Sets.” Select the zipped file for “EU Countries Area & Production.” (For more information, please contact Bryan.Purcell@usda.gov.)

Argentina Soybeans: Production is Up for MY 2025/26, Due to Favorable Weather over the Growing Season

USDA estimates Argentina soybeans production for marketing year (MY) 2025/26 at 50.0 million metric tons, up 4 percent from last month, but down 2 percent from the previous year’s crop (MY 24/25). Yield is estimated at 3.07 tons per hectare, up 4 percent from last month and up 5 percent from MY 2024/25. Harvested area is estimated at 16.3 million hectares, unchanged from last month, but down 7 percent from MY 2024/25.



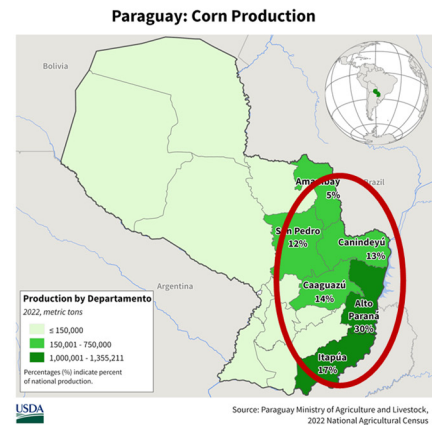
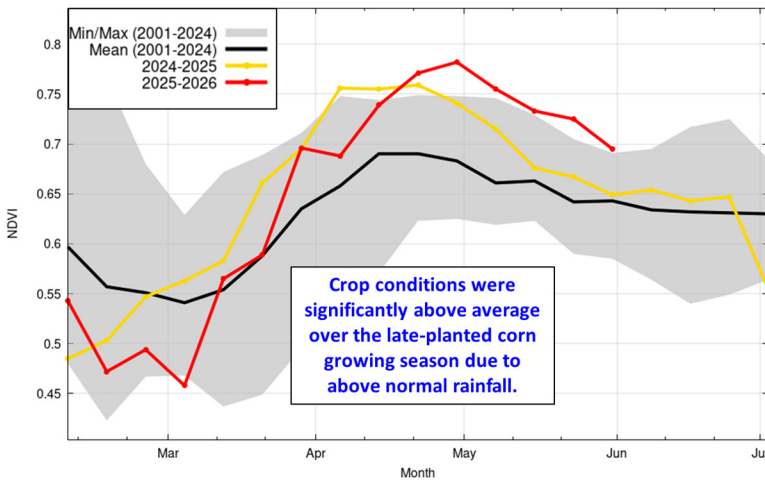
Source: Bolsa de Cereales Buenos Aires

Soybeans in Argentina are grown as either first or second soybeans. Second soybeans are planted on the same field after the winter crop harvest, which means second soybeans are typically lower yielding since they have a shorter growing season and have been planted in soil leached of nutrients and soil moisture by the winter crop. Early planted soybeans are typically higher yielding. Soybeans in Argentina are about 75 percent early-soybeans and 25 percent late-soybeans. Timely rainfall during the growing season for both first and second soybeans helped boost yields. As of the beginning of June, harvest is almost complete and harvest results from Bolsa Cereales Buenos Aires indicate an above-average yield. *(For more information, please contact Katie.McGaughey@usda.gov.)*

Paraguay Corn: Production for MY 2025/26 is Up, Matching the Record

USDA estimates Paraguay corn production for marketing year (MY) 2025/26 at 6.4 million metric tons, matching the record, and up 14 percent from last month and the previous year's crop (MY 2024/25). Yield is estimated at 6.40 tons per hectare, matching the record from MY 2024/25. Harvested area is estimated at 1.0 million hectares, the third highest on record, and unchanged from last month, but up 14 percent from MY 2024/25. Corn area is expanding in Paraguay due to a robust bioethanol sector and ongoing demand from the animal protein industries.

Paraguay Corn Regions: VIIRS NDVI 8-day Time Series



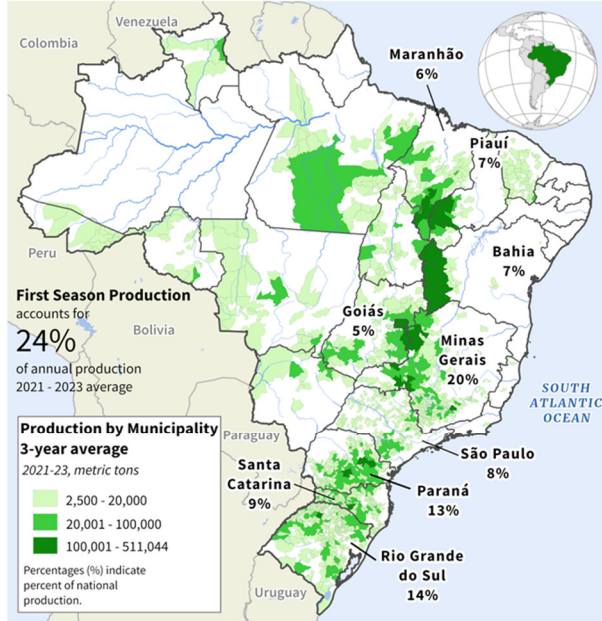
Sources: USDA/NASA Global Agricultural Monitoring (GLAM) S-NPP VIIRS 8-day NDVI; Crop Mask: ESA World Cover 2020

Paraguay has two corn seasons, early and late planted corn. Early corn is the smaller crop season (about 17 percent on average), and planting is from June through September, with harvest occurring from January through March. Late corn is the larger crop season (about 83 percent on average), and planting begins in January and continues through March. Harvest begins in May and is finished by the end of August. Conditions were significantly above average over the late corn's growing season due to above-normal rainfall and minimal days of heat stress, leading to record yields. *(For more information, please contact Katie.McGaughey@usda.gov.)*

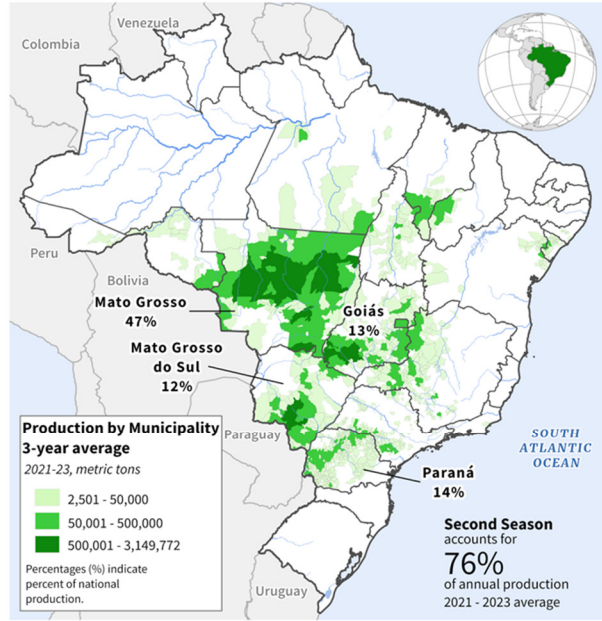
Brazil Corn: MY 2025/26 Production Increased on Larger First Crop and Positive Second-Season Conditions

USDA estimates Brazil corn production for marketing year (MY) 2025/26 at 138.0 million metric tons (mmt), up 2 percent from last month. Harvested area is estimated at 22.8 million hectares, unchanged from last month. Yield is estimated at 6.05 tons per hectare, up 2 percent from last month.

Brazil: First Season Corn Production



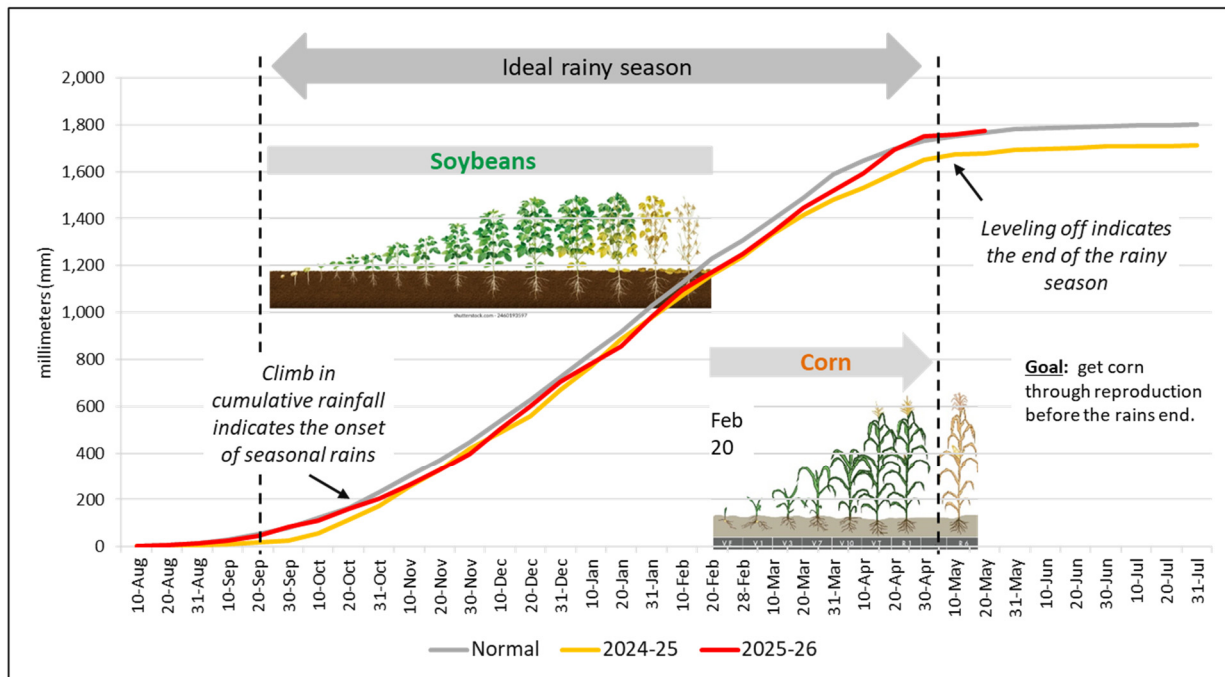
Brazil: Second Season Corn Production



Source: IBGE - Produção Agrícola Municipal

Two factors have contributed to USDA’s upward revision of its MY 2025/26 Brazil corn estimate. First, Brazilian farmers grew the largest first corn crop in nine years. The *Companhia Nacional de Abastecimento* (CONAB) has raised its first corn estimate by 1.1 million tons since March, which now stands at 3.4 mmt above MY 2024/25 and 3.5 mmt above the 3-year average.

Mato Grosso, Brazil: Seasonal Cumulative Rainfall, 2025-26



Source: UCSB CHIRPS v2 Precipitation Data

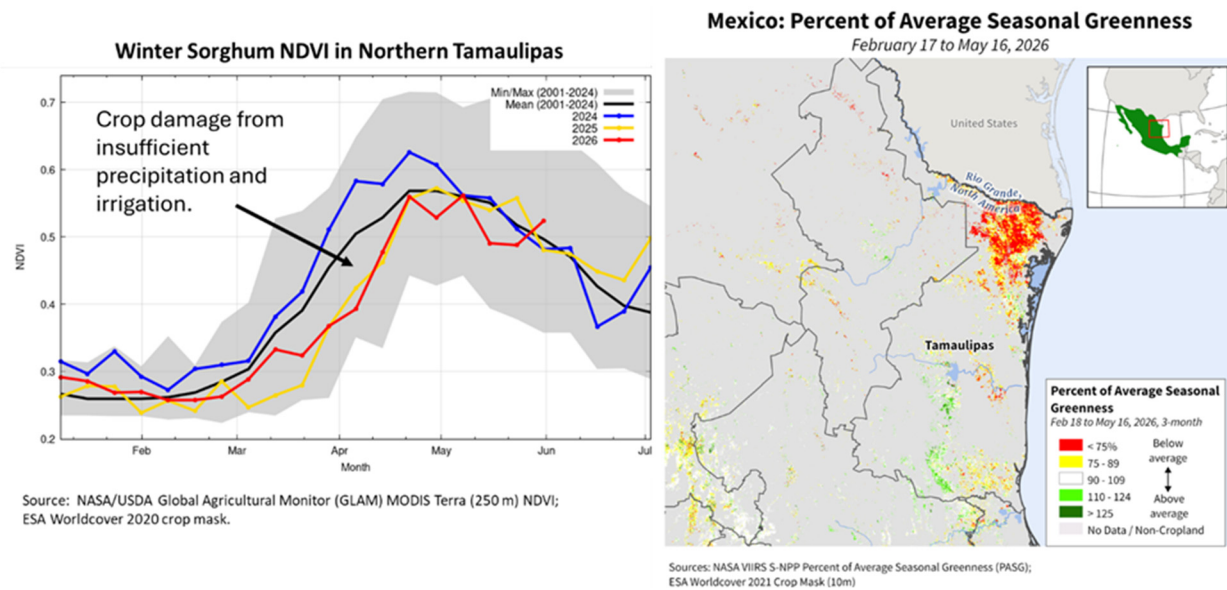
The larger first corn crop occurs in conjunction with an above-average second (*safrinha*) crop. The *safrinha* crop is planted subsequent to the soybean harvest and positioned to capitalize on the remainder of the Brazilian rainy season, which typically begins in September and ends in May. Ideally, *safrinha* corn planting in Mato Grosso, where nearly half of the second crop is grown, occurs prior to the end of February, and the rainy season extends to the beginning of May. This year, planting in Mato Grosso was nearly complete by the end of February, and abundant rainfall was received through mid-May, resulting in an above-average crop. Reporting from the states of Paraná and Mato Grosso do Sul was also positive. However, conditions in many parts of the state of Goiás were below average, with intermittent rainfall, and areas of dryness that diminished yields, leading to a below-average crop in the state. Reductions in Goiás limited overall national yield potential for *safrinha* corn, which, while not reaching the bumper levels of the previous season, remained well above-average. *(For more information, please contact Aaron.Mulhollen@usda.gov.)*

Mexico Sorghum: Drought and Profitability Impact MY 2025/26 Production

USDA estimates Mexico sorghum production for marketing year (MY) 2025/26 at 3.2 million metric tons (mmt), down 16 percent from last month and 24 percent from MY 2024/25. Harvested area is estimated at 1.0 million hectares, down 9 percent from last month and 17 percent from MY 2024/25. Yield is estimated at 3.20 metric tons per hectare (mt/ha), down 7 percent from last month and 9 percent from MY 2024/25. The relatively improved conditions for summer sorghum are insufficient to offset the drought conditions impacting the winter sorghum crop.

Mexico sorghum is planted in two seasons, spring/summer followed by fall/winter. The harvested area for spring/summer sorghum increased over the same season of MY 2024/25, due to land reconversion to sorghum in producing states including Tamaulipas, San Luis Potosí, and Chihuahua. According to Mexico's Agri-Food and Fisheries Information Service (SIAP), the latest yield estimate for this drought-tolerant crop is lower than the same season of MY 2024/25. The lower yield resulted in a reduced spring/summer production estimate, yet still much higher than the fall/winter crop.

Mexico: Drought in Northern Tamaulipas Reduces Winter Sorghum Yield



Fall/winter area is down because farmers in Tamaulipas planted roughly 200,000 ha less due to decreased profitability. The fall/winter sorghum crop is typically planted from September through March and harvested from March through July, with about 77 percent of the winter production coming from Tamaulipas. However, the yield is much lower due to prolonged drought in northern Tamaulipas that reduced necessary water for irrigation. Yield impacts were corroborated by the satellite-derived VIIRS Percent of Average Seasonal Greenness. This seasonal Normalized Difference Vegetation Index (NDVI) calculation covered a key period of sorghum crop development. Fewer factors negatively impacted the spring/summer crop while profitability and drought conditions contributed to severely reducing fall/winter production. (*For more information, please contact Lisa.Colson@usda.gov.*)



**World Agricultural Production
U.S. Department of Agriculture**

Foreign Agricultural Service / Global Market Analysis
International Production Assessment Division (IPAD)
GMA/IPAD Room 5071, South Building
1400 Independence Ave SW
Washington, DC 20250-1051

This report uses information from the Foreign Agricultural Service’s (FAS) global network of agricultural attachés and counselors, official statistics of foreign governments and other foreign source materials, and the analysis of economic data and satellite imagery. Estimates of foreign area, yield, and production are from the International Production Assessment Division (IPAD), FAS, and are reviewed by USDA’s Inter-Agency Commodity Estimates Committee. Estimates of U.S. area, yield, and production are from USDA’s National Agricultural Statistics Service. Numbers within the report may not add to totals because of rounding. This report reflects official USDA estimates released in the World Agricultural Supply and Demand Estimates (WASDE-584), June 11, 2026.

The FAS International Production Assessment Division prepared this report. The next issue of World Agricultural Production will be released after 12:00 p.m. Eastern Time, July 10, 2026.

Conversion Table

Metric tons to bushels

Wheat, soybeans	=	MT * 36.7437
Corn, sorghum, rye	=	MT * 39.36825
Barley	=	MT * 45.929625
Oats	=	MT * 68.894438

Metric tons to 480-lb bales

Cotton	=	MT * 4.592917
--------	---	---------------

Metric tons to hundredweight

Rice	=	MT * 22.04622
------	---	---------------

Area & weight

1 hectare	=	2.471044 acres
1 kilogram	=	2.204622 pounds



For further information, contact:
U.S. Department of Agriculture
Foreign Agricultural Service
Global Market Analysis

International Production Assessment Division
 GMA/IPAD Room 5071, South Building
 1400 Independence Ave SW
 Washington, DC 20250-1051

GENERAL INFORMATION

Senior Director	Ronald Frantz	ronald.frantz@usda.gov
Director	Vacant	
USDA Remote Sensing Advisor	Vacant	
Sr. Analyst/Technical Lead	Curt Reynolds, Ph.D.	curt.reynolds@usda.gov
Sr. Analyst/Technical Lead	Dath Mita, Ph.D.	dath.mita@usda.gov
Sr. Analyst/Technical Lead	Vacant	
GIS Mapping/Imagery Analyst	Lisa Colson	lisa.colson@usda.gov
WAP Coordinators	Shannon Moyo	shannon.moyo@usda.gov
	Vacant	

ANALYSIS REGIONS

ANALYST

CONTACT INFORMATION

Brazil, Pakistan, and South Asia	Aaron Mulhollen	aaron.mulhollen@usda.gov
South America (except Brazil), and Central Asia	Katie McGaughey	katie.mcgaughey@usda.gov
Europe, North Africa, and Middle East	Bryan Purcell	bryan.purcell@usda.gov
India, China and East Asia	Dath Mita, Ph.D.	dath.mita@usda.gov
South Africa and Sub-Saharan Africa	Curt Reynolds, Ph.D.	curt.reynolds@usda.gov
Southeast Asia	Justin Jenkins	justin.jenkins@usda.gov
Mexico and Central America	Lisa Colson	lisa.colson@usda.gov
Australia and Oceania	Shannon Moyo	shannon.moyo@usda.gov
Canada and Caribbean	Sarah Parker	sarah.parker@usda.gov
Russia, Ukraine, Kazakhstan, Moldova, and Belarus	Iliana Mladenova, Ph.D.	iliana.mladenova@usda.gov



The Foreign Agricultural Service (FAS) updates its production, supply and distribution (PSD) database for cotton, oilseeds, and grains at 12:00 p.m. on the day the *World Agricultural Supply and Demand Estimates* (WASDE) report is released. This circular is released by 12:15 p.m.

FAS Reports and Databases:

World Agricultural Production

Current: <https://www.fas.usda.gov/data/world-agricultural-production>

Archive: <https://esmis.nal.usda.gov/publication/world-agricultural-production>

USDA's Foreign Agricultural Service (FAS) publishes a monthly report on crop acreage, yield and production in major countries worldwide. Sources include reporting from FAS's worldwide offices, official statistics of foreign governments, and analysis of economic data and satellite imagery. The reports reflect official USDA estimates released in the monthly *World Agricultural Supply and Demand Estimates* (WASDE).

World Markets and Trade

Current: https://www.fas.usda.gov/data/search?reports%5B0%5D=report_type%3A10259

Archive: <https://esmis.nal.usda.gov/?f%5B0%5D=agency%3A1>

USDA's Foreign Agricultural Service (FAS) publishes monthly and quarterly reports which include data on U.S. and global trade, production, consumption and stocks, as well as analysis of developments affecting world trade in oilseeds, grains, cotton, livestock and poultry. The reports reflect official USDA estimates released in the monthly *World Agricultural Supply and Demand Estimates* (WASDE).

Global Agricultural Information Network (GAIN)

<https://gain.fas.usda.gov/>

USDA's Foreign Agricultural Service (FAS) provides timely reports on foreign markets through the Global Agriculture Information Network (GAIN) database. An average of 2,000 reports are added each year, with reports going back to 1995. GAIN reports are compiled by FAS' global market intelligence network, which includes FAS foreign service officers and locally engaged staff in over 90 overseas offices world-wide. They provide on-the-ground intelligence, insight, and analysis on nearly 200 countries, delivering information on foreign agricultural markets, crop conditions, and agro-political dynamics of interest to U.S. agriculture. GAIN reports contain assessments of commodity and trade issues made by USDA staff and are not necessarily statements of official U.S. government policy.

Production, Supply and Distribution (PS&D) Online

<https://apps.fas.usda.gov/psdonline/app/index.html#/app/home>

PSD Online is the public repository for USDA's Official Production, Supply and Distribution forecast data and reports for key agricultural commodities. PSD Online data are reviewed and updated monthly by an interagency committee chaired by USDA's World Agricultural Outlook Board (WAOB). The committee consist of representatives from Foreign Agricultural Service (FAS), the Economic Research Service (ERS), the Farm Service Agency (FSA), and the Agricultural Marketing Service (AMS).

EU Countries and Russia Wheat: Area and Production Estimates

<https://apps.fas.usda.gov/psdonline/app/index.html#/app/downloads> (click on PSD Datasets)

USDA's Foreign Agricultural Service (FAS) provides country-level area and production estimates for the nations of the European Union. For Russia, country-level area and production estimates are provided for Winter and Spring wheat. These datasets are reviewed and updated monthly by an interagency committee chaired by USDA's World Agricultural Outlook Board (WAOB) and can be downloaded through PSD datasets on PSD Online.



FAS Reports and Databases:

International Production Assessment (IPAD)

Due to U.S. Department of Agriculture (USDA) guidance, the International Production Assessment Division (IPAD) website is no longer available to the public. Crop production maps, crop calendars, and historical commodity-specific area, yield, and production data is available on the FAS website.

<https://www.fas.usda.gov/data>

USDA and NASA Global Agricultural Monitoring (GLAM)

<https://glam1.gsfc.nasa.gov/>

The USDA and NASA Global Agricultural Monitoring (GLAM) system provides near real-time and science quality Moderate Resolution Imaging Spectroradiometer (MODIS) Normalized Difference Vegetation Index (NDVI) from the satellites Terra and Aqua. The public can view and retrieve MODIS 8-day composited, global NDVI satellite imagery and time series data. GLAM was developed by NASA's Global Inventory Modeling and Mapping Studies (GIMMS) group for USDA's Foreign Agricultural Service.

Global Agricultural and Disaster Assessment System (GADAS)

<https://geo.fas.usda.gov/GADAS/index.html>

USDA's Foreign Agricultural Service (FAS) provides the Global Agricultural and Disaster Assessment System (GADAS), a web-based Geographic Information System (GIS) tool which integrates a vast array of highly detailed earth observation data streams, particularly targeted towards agricultural and disaster assessment analysis. GADAS is an interactive website which provides analysts with a wide variety of routine geospatial products (maps, charts, tables) they require for comprehensive situational investigations and recurring assessments.

Export Sales Reporting

<https://apps.fas.usda.gov/esrquery/>

USDA's Export Sales Reporting Program monitors U.S. agricultural export sales on a daily and weekly basis. Export sales reporting provides a constant stream of up-to-date market information for 40 U.S. agricultural commodities sold abroad. The weekly U.S. Export Sales report is the most currently available source of U.S. exports sales data. The data is used to analyze overall levels of export demand, determine where markets exit, and assess the relative position of U.S. commodities in foreign markets.

Global Agricultural Trade System (GATS)

<https://apps.fas.usda.gov/gats/default.aspx>

The Global Agricultural Trade System (GATS) is a searchable database containing monthly U.S. Census Bureau trade data organized by agricultural commodity and agricultural related product groups. Trade data is searchable by partner countries and partner groups. Historical U.S. agricultural trade data is available back to 1967. In addition, U.N. trade statistics (UN Comtrade) may be queried through GATS. UN trade data is available for nearly 200 countries or areas, dating from the inception of the Harmonized System (HS) of trade codes in 1989 to present. The database is continuously updated. U.S. trade data is updated monthly according to the U.S. Census Bureau's reporting system. UN Comtrade data are updated in GATS after nationally submitted data to the UN are standardized by the UN Statistical Division and added to the UN Comtrade database.

Other USDA Reports:

World Agricultural Supply and Demand Estimates (WASDE):

<http://www.usda.gov/oce/commodity/wasde/>

Economic Research Service:

<http://www.ers.usda.gov/topics/crops>

National Agricultural Statistics Service:

<http://www.nass.usda.gov/Publications/>

Table 01 World Crop Production Summary

Million Metric Tons

Commodity	World	Total Foreign	North America			Former Soviet		European	Asia (WAP)					South America		Selected Other			All Others
			United States	Canada	Mexico	Russia	Ukraine		China	India	Indonesia	Pakistan	Thailand	Argentina	Brazil	Australia	South Africa	Turkey	
			-	-	-	-	-		-	-	-	-	-	-	-	-	-	-	
---Million metric tons---																			
Wheat																			
2024/25	799.3	745.5	53.9	35.9	2.6	81.6	23.4	nr	140.1	113.3	0.0	31.4	0.0	18.5	7.9	34.1	1.9	19.0	235.6
2025/26 prel.	844.4	790.3	54.0	40.0	1.8	90.3	24.1	nr	140.1	117.9	0.0	29.0	0.0	27.9	7.9	36.0	1.9	16.8	256.8
2026/27 proj.																			
May	819.1	776.6	42.5	35.0	2.2	86.0	23.0	nr	141.0	121.0	0.0	30.0	0.0	21.0	6.7	30.0	1.9	21.0	257.7
Jun	820.1	778.1	42.0	35.0	2.0	88.0	23.5	nr	141.0	121.0	0.0	29.0	0.0	21.0	6.7	28.0	1.9	22.5	258.4
Coarse Grains																			
2024/25	1,515.3	1,123.7	391.5	27.5	28.3	34.8	33.5	nr	303.5	63.7	13.1	8.6	5.4	57.5	143.6	17.7	17.8	14.5	354.5
2025/26 prel.	1,622.3	1,174.5	447.8	29.4	29.1	39.4	37.2	nr	310.2	74.6	13.3	10.1	5.5	69.8	145.1	21.3	18.2	13.7	357.7
2026/27 proj.																			
May	1,588.6	1,168.7	419.9	27.5	29.3	38.9	36.1	nr	316.0	66.8	13.5	10.1	5.4	64.2	147.2	18.0	17.0	16.1	362.6
Jun	1,594.5	1,174.5	419.9	27.5	29.3	38.9	36.3	nr	316.0	71.3	13.5	10.1	5.4	64.2	147.2	18.4	17.0	16.6	362.8
Rice, Milled																			
2024/25	542.0	535.0	7.1	0.0	0.2	0.8	0.0	nr	145.3	150.2	34.1	9.7	20.8	1.1	8.7	0.4	0.0	0.6	163.2
2025/26 prel.	544.7	538.2	6.6	0.0	0.2	0.8	0.0	nr	146.3	154.0	33.8	9.4	20.7	0.9	7.6	0.1	0.0	0.6	163.8
2026/27 proj.																			
May	537.8	532.3	5.6	0.0	0.2	0.8	0.0	nr	147.0	150.0	33.6	9.6	20.3	0.7	7.4	0.1	0.0	0.6	162.0
Jun	537.8	532.3	5.6	0.0	0.2	0.8	0.0	nr	147.0	150.0	33.6	9.6	20.3	0.7	7.4	0.1	0.0	0.6	162.0
Total Grains																			
2024/25	2,856.6	2,404.2	452.4	63.5	31.1	117.2	56.9	nr	588.8	327.2	47.2	49.7	26.2	77.0	160.2	52.2	19.8	34.0	753.3
2025/26 prel.	3,011.4	2,503.0	508.4	69.4	31.0	130.5	61.3	nr	596.6	346.6	47.1	48.5	26.2	98.5	160.6	57.4	20.1	31.0	778.3
2026/27 proj.																			
May	2,945.5	2,477.5	468.0	62.5	31.7	125.6	59.1	nr	604.0	337.8	47.1	49.7	25.7	85.9	161.3	48.1	19.0	37.6	782.3
Jun	2,952.4	2,484.9	467.5	62.5	31.5	127.6	59.8	nr	604.0	342.3	47.1	48.7	25.7	85.9	161.3	46.5	19.0	39.6	783.3
Oilseeds																			
2024/25	686.7	558.1	128.6	26.9	0.7	28.6	24.0	nr	67.8	42.8	14.7	2.9	1.1	59.1	179.6	7.9	3.9	3.1	94.9
2025/26 prel.	700.6	574.5	126.2	28.9	0.6	32.0	20.0	nr	69.4	41.8	15.1	3.1	1.1	59.1	187.9	8.9	4.2	2.7	99.6
2026/27 proj.																			
May	718.1	587.7	130.4	29.4	0.7	34.2	23.3	nr	69.3	43.0	15.1	3.0	1.1	60.1	193.3	7.7	3.9	3.0	100.7
Jun	718.2	587.8	130.4	29.4	0.7	34.3	23.5	nr	69.3	43.0	15.1	3.0	1.1	60.1	193.3	7.7	4.0	3.0	100.5
Cotton																			
2024/25	119.3	104.9	14.4	0.0	1.0	0.0	0.0	1.2	32.0	24.0	0.0	5.0	0.0	1.4	17.0	5.6	0.1	4.0	13.7
2025/26 prel.	122.7	108.8	13.9	0.0	0.6	0.0	0.0	1.2	35.8	23.8	0.0	5.3	0.0	1.0	19.5	4.5	0.1	3.1	14.0
2026/27 proj.																			
May	116.0	102.7	13.3	0.0	0.7	0.0	0.0	1.2	33.5	24.0	0.0	5.1	0.0	1.4	17.5	3.0	0.1	2.5	13.8
Jun	116.0	102.7	13.3	0.0	0.7	0.0	0.0	1.2	33.5	24.0	0.0	5.1	0.0	1.4	17.5	3.0	0.1	2.5	13.8

1/ Includes wheat, coarse grains, and rice (milled) shown above.

Table 02 Wheat Area, Yield, and Production

Country / Region	Area (Million hectares)				Yield (Metric tons per hectare)				Production (Million metric tons)				Change in Production			
	2024/25	Prel.	2026/27 Proj.		2024/25	Prel.	2026/27 Proj.		2024/25	Prel.	2026/27 Proj.		From last month		From last year	
		2025/26	May	Jun		2025/26	May	Jun		2025/26	May	Jun	MMT	Percent	MMT	Percent
World	222.22	220.16	218.42	217.10	3.60	3.84	3.75	3.78	799.31	844.36	819.06	820.06	1.00	0.12	-24.29	-2.88
United States	15.63	15.07	13.30	13.30	3.44	3.58	3.19	3.16	53.85	54.01	42.49	42.01	-0.49	-1.14	-12.00	-22.22
Total Foreign	206.59	205.09	205.12	203.80	3.61	3.85	3.79	3.82	745.46	790.35	776.57	778.06	1.49	0.19	-12.29	-1.55
European Union	22.71	23.96	23.60	23.60	5.33	6.06	5.76	5.76	121.06	145.11	136.00	136.00	0.00	0.00	-9.11	-6.28
United Kingdom	1.53	1.65	1.70	1.70	7.30	7.45	7.94	7.94	11.15	12.30	13.50	13.50	0.00	0.00	1.20	9.76
Serbia	0.63	0.61	0.63	0.63	5.28	6.07	5.40	5.40	3.30	3.70	3.40	3.40	0.00	0.00	-0.30	-8.11
China	23.59	23.58	23.60	23.60	5.94	5.94	5.97	5.97	140.10	140.07	141.00	141.00	0.00	0.00	0.93	0.66
South Asia																
India	31.83	32.80	33.50	33.50	3.56	3.60	3.61	3.61	113.29	117.95	121.00	121.00	0.00	0.00	3.06	2.59
Pakistan	9.73	9.10	9.40	9.40	3.23	3.18	3.19	3.09	31.44	28.98	30.00	29.00	-1.00	-3.33	0.02	0.07
Afghanistan	2.12	2.25	2.10	2.10	2.28	2.13	2.19	2.29	4.83	4.80	4.60	4.80	0.20	4.35	0.00	0.00
Nepal	0.72	0.71	0.71	0.71	2.92	3.10	3.10	3.10	2.10	2.20	2.20	2.20	0.00	0.00	0.00	0.00
Former Soviet Union - 12																
Russia	27.80	26.30	26.30	25.80	2.94	3.43	3.27	3.41	81.60	90.30	86.00	88.00	2.00	2.33	-2.30	-2.55
Russia Winter	15.70	15.50	15.30	15.30	3.55	4.06	3.99	4.18	55.80	63.00	61.00	64.00	3.00	4.92	1.00	1.59
Russia Spring	12.10	10.80	11.00	10.50	2.13	2.53	2.27	2.29	25.80	27.30	25.00	24.00	-1.00	-4.00	-3.30	-12.09
Ukraine	5.20	5.65	5.20	5.20	4.50	4.27	4.42	4.52	23.40	24.10	23.00	23.50	0.50	2.17	-0.60	-2.49
Kazakhstan	13.07	12.20	12.00	12.00	1.42	1.58	1.25	1.25	18.58	19.33	15.00	15.00	0.00	0.00	-4.33	-22.38
Uzbekistan	1.24	1.32	1.30	1.30	5.41	4.64	5.54	5.54	6.73	6.10	7.20	7.20	0.00	0.00	1.10	18.03
Belarus	0.72	0.73	0.73	0.73	3.82	3.70	3.84	3.84	2.75	2.70	2.80	2.80	0.00	0.00	0.10	3.70
Canada	10.65	10.62	10.30	10.30	3.37	3.76	3.40	3.40	35.94	39.96	35.00	35.00	0.00	0.00	-4.96	-12.40
South America																
Argentina	6.34	6.80	6.40	6.40	2.92	4.10	3.28	3.28	18.51	27.92	21.00	21.00	0.00	0.00	-6.92	-24.78
Brazil	3.06	2.45	2.30	2.30	2.58	3.22	2.91	2.91	7.89	7.87	6.70	6.70	0.00	0.00	-1.17	-14.90
Australia	13.06	12.41	11.80	11.00	2.61	2.90	2.54	2.55	34.11	35.99	30.00	28.00	-2.00	-6.67	-7.99	-22.19
Africa																
Egypt	1.30	1.33	1.50	1.50	6.92	6.92	6.67	6.67	9.00	9.20	10.00	10.00	0.00	0.00	0.80	8.70
Morocco	2.20	2.20	2.80	2.80	1.12	1.59	2.68	2.68	2.46	3.50	7.50	7.50	0.00	0.00	4.00	114.29
Algeria	1.80	1.80	2.00	2.00	1.67	1.78	2.05	2.05	3.00	3.20	4.10	4.10	0.00	0.00	0.90	28.13
Ethiopia	2.05	2.10	2.20	2.20	3.02	3.10	3.09	3.09	6.20	6.50	6.80	6.80	0.00	0.00	0.30	4.62
Middle East																
Turkey	7.25	7.30	7.45	7.45	2.62	2.30	2.82	3.02	19.00	16.80	21.00	22.50	1.50	7.14	5.70	33.93
Iran	6.20	6.20	6.20	6.20	2.58	2.18	2.58	2.58	16.00	13.50	16.00	16.00	0.00	0.00	2.50	18.52
Iraq	2.70	2.40	2.50	2.50	2.22	1.83	2.32	2.32	6.00	4.40	5.80	5.80	0.00	0.00	1.40	31.82
Syria	1.40	1.20	1.40	1.40	2.14	0.96	2.50	2.71	3.00	1.15	3.50	3.80	0.30	8.57	2.65	230.43
Mexico	0.47	0.32	0.40	0.38	5.66	5.47	5.50	5.33	2.65	1.75	2.20	2.00	-0.20	-9.09	0.25	14.29
Others	7.22	7.11	7.10	7.10	2.96	2.95	3.00	3.02	21.39	20.99	21.27	21.46	0.19	0.87	0.47	2.24

Table 03 Total Coarse Grain Area, Yield, and Production

Country / Region	Area (Million hectares)				Yield (Metric tons per hectare)				Production (Million metric tons)				Change in Production			
	Prel.		2026/27 Proj.		Prel.		2026/27 Proj.		Prel.		2026/27 Proj.		From last month		From last year	
	2024/25	2025/26	May	Jun	2024/25	2025/26	May	Jun	2024/25	2025/26	May	Jun	MMT	Percent	MMT	Percent
World	336.52	343.48	344.36	345.74	4.50	4.72	4.61	4.61	1,515.26	1,622.29	1,588.65	1,594.49	5.84	0.37	-27.80	-1.71
United States	37.16	40.60	38.73	38.73	10.53	11.03	10.84	10.84	391.51	447.83	419.94	419.94	0.00	0.00	-27.89	-6.23
Total Foreign	299.35	302.88	305.63	307.01	3.75	3.88	3.82	3.83	1,123.75	1,174.45	1,168.71	1,174.55	5.84	0.50	0.09	0.01
China	47.24	47.54	47.98	47.98	6.42	6.53	6.59	6.59	303.47	310.19	315.95	315.95	0.00	0.00	5.76	1.86
European Union	26.07	25.48	25.27	25.27	5.26	5.63	5.51	5.51	137.22	143.48	139.16	139.16	0.00	0.00	-4.32	-3.01
United Kingdom	1.36	1.34	1.30	1.30	6.06	5.71	5.66	5.66	8.26	7.65	7.38	7.38	0.00	0.00	-0.27	-3.53
South America																
Brazil	24.55	25.14	25.86	25.86	5.85	5.77	5.69	5.69	143.59	145.10	147.21	147.21	0.00	0.00	2.10	1.45
Argentina	9.28	10.40	10.40	10.40	6.19	6.71	6.18	6.18	57.46	69.76	64.22	64.22	0.00	0.00	-5.54	-7.94
Former Soviet Union - 12																
Russia	11.74	11.03	11.35	11.35	2.96	3.57	3.42	3.42	34.78	39.35	38.87	38.87	0.00	0.00	-0.48	-1.22
Ukraine	6.05	6.21	5.94	5.94	5.53	6.00	6.08	6.11	33.47	37.22	36.08	36.28	0.20	0.55	-0.94	-2.53
Kazakhstan	2.72	2.69	2.87	2.87	1.94	1.83	1.76	1.76	5.27	4.93	5.06	5.06	0.00	0.00	0.13	2.66
Belarus	1.17	1.17	1.18	1.18	3.36	3.56	3.55	3.55	3.92	4.16	4.19	4.19	0.00	0.00	0.03	0.72
Africa																
Nigeria	11.86	12.08	12.46	12.46	1.62	1.63	1.58	1.58	19.18	19.75	19.65	19.65	0.00	0.00	-0.10	-0.51
South Africa	3.15	3.31	3.20	3.20	5.67	5.51	5.33	5.33	17.84	18.23	17.04	17.04	0.00	0.00	-1.19	-6.52
Tanzania	5.15	5.05	5.05	5.05	1.87	1.70	1.66	1.66	9.63	8.58	8.38	8.38	0.00	0.00	-0.20	-2.33
Burkina Faso	4.20	4.10	4.10	4.10	1.15	1.13	1.13	1.13	4.85	4.65	4.65	4.65	0.00	0.00	0.00	0.00
Ethiopia	5.62	5.57	5.70	5.70	3.16	3.19	3.20	3.20	17.73	17.78	18.20	18.20	0.00	0.00	0.43	2.39
Egypt	1.09	1.02	1.02	1.02	7.22	7.41	7.71	7.71	7.88	7.57	7.88	7.88	0.00	0.00	0.31	4.03
Mali	5.40	5.30	5.30	5.30	1.40	1.43	1.36	1.36	7.58	7.57	7.20	7.20	0.00	0.00	-0.37	-4.82
India	25.70	27.29	26.72	27.98	2.48	2.73	2.50	2.55	63.70	74.59	66.80	71.30	4.50	6.73	-3.30	-4.42
Southeast Asia																
Indonesia	3.50	3.55	3.55	3.55	3.74	3.75	3.80	3.80	13.10	13.30	13.50	13.50	0.00	0.00	0.20	1.50
Philippines	2.45	2.40	2.45	2.45	3.40	3.40	3.39	3.39	8.33	8.15	8.30	8.30	0.00	0.00	0.15	1.84
Vietnam	0.87	0.84	0.83	0.83	5.05	5.03	4.97	4.97	4.40	4.20	4.10	4.10	0.00	0.00	-0.10	-2.38
Thailand	1.24	1.25	1.23	1.23	4.32	4.37	4.36	4.36	5.35	5.45	5.35	5.35	0.00	0.00	-0.10	-1.83
Mexico	8.05	8.03	7.85	7.85	3.51	3.62	3.74	3.74	28.27	29.09	29.35	29.35	0.00	0.00	0.26	0.89
Canada	5.05	5.04	5.02	5.02	5.45	5.84	5.49	5.49	27.52	29.41	27.54	27.54	0.00	0.00	-1.87	-6.36
Australia	6.08	6.42	6.61	6.73	2.91	3.31	2.73	2.74	17.70	21.25	18.05	18.45	0.40	2.22	-2.80	-13.19
Middle East																
Turkey	4.55	4.35	4.54	4.54	3.18	3.14	3.54	3.65	14.46	13.65	16.05	16.55	0.50	3.12	2.90	21.25
Iran	1.81	1.86	1.86	1.86	2.50	2.38	2.65	2.65	4.52	4.42	4.92	4.92	0.00	0.00	0.50	11.31
Others	73.44	74.45	76.03	76.03	1.69	1.68	1.76	1.76	124.30	124.99	133.65	133.89	0.24	0.18	8.90	7.12

World and Selected Countries and Regions; Coarse Grain includes: Barley, Corn, Millet, Mixed Grains, Oats, Rye and Sorghum

Table 04 Corn Area, Yield, and Production

Country / Region	Area (Million hectares)				Yield (Metric tons per hectare)				Production (Million metric tons)				Change in Production			
	2024/25	Prel.		2026/27 Proj.		2024/25	Prel.		2026/27 Proj.		2024/25	Prel.		2026/27 Proj.		
		2025/26	May	Jun	2025/26		May	Jun	2025/26	May		Jun	MMT	Percent	MMT	Percent
World	206.23	215.17	212.88	214.29	5.98	6.17	6.08	6.07	1,233.20	1,326.67	1,295.38	1,300.38	5.00	0.39	-26.29	-1.98
United States	33.61	36.93	35.37	35.37	11.26	11.71	11.49	11.49	378.27	432.34	406.29	406.29	0.00	0.00	-26.05	-6.03
Total Foreign	172.62	178.24	177.51	178.92	4.95	5.02	5.01	5.00	854.93	894.33	889.09	894.09	5.00	0.56	-0.24	-0.03
China	44.74	44.96	45.40	45.40	6.59	6.70	6.76	6.76	294.92	301.24	307.00	307.00	0.00	0.00	5.76	1.91
South America																
Brazil	22.30	22.80	23.20	23.20	6.10	6.05	5.99	5.99	136.00	138.00	139.00	139.00	0.00	0.00	1.00	0.72
Argentina	6.83	8.20	7.90	7.90	7.18	7.44	6.96	6.96	49.00	61.00	55.00	55.00	0.00	0.00	-6.00	-9.84
Bolivia	0.43	0.44	0.43	0.43	2.56	2.61	2.67	2.67	1.10	1.15	1.15	1.15	0.00	0.00	0.00	0.00
European Union	8.60	8.19	7.80	7.80	6.93	6.94	7.37	7.37	59.59	56.80	57.50	57.50	0.00	0.00	0.70	1.23
Africa																
South Africa	2.96	3.11	3.00	3.00	5.85	5.69	5.50	5.50	17.27	17.70	16.50	16.50	0.00	0.00	-1.20	-6.78
Nigeria	5.06	5.20	5.20	5.20	2.22	2.25	2.21	2.21	11.22	11.70	11.50	11.50	0.00	0.00	-0.20	-1.71
Ethiopia	2.55	2.55	2.60	2.60	4.00	4.04	4.04	4.04	10.20	10.30	10.50	10.50	0.00	0.00	0.20	1.94
Egypt	0.92	0.85	0.85	0.85	7.61	7.88	8.24	8.24	7.00	6.70	7.00	7.00	0.00	0.00	0.30	4.48
Tanzania	4.10	4.00	4.00	4.00	2.07	1.88	1.83	1.83	8.50	7.50	7.30	7.30	0.00	0.00	-0.20	-2.67
Malawi	1.50	1.80	1.80	1.80	1.81	1.59	1.83	1.83	2.71	2.86	3.30	3.30	0.00	0.00	0.44	15.38
Zambia	0.68	1.69	1.70	1.70	2.21	2.16	2.12	2.12	1.51	3.66	3.60	3.60	0.00	0.00	-0.06	-1.53
Kenya	2.10	1.90	2.30	2.30	1.81	1.79	1.96	1.96	3.80	3.40	4.50	4.50	0.00	0.00	1.10	32.35
Uganda	2.30	2.30	2.30	2.30	2.17	1.96	2.17	2.17	5.00	4.50	5.00	5.00	0.00	0.00	0.50	11.11
Zimbabwe	0.90	1.00	1.82	1.82	0.71	1.50	0.99	0.99	0.64	1.50	1.80	1.80	0.00	0.00	0.30	20.00
Former Soviet Union - 12																
Ukraine	4.10	4.40	4.20	4.20	6.54	7.02	7.14	7.14	26.80	30.90	30.00	30.00	0.00	0.00	-0.90	-2.91
Russia	2.70	2.30	2.50	2.50	5.19	6.43	6.32	6.32	14.00	14.80	15.80	15.80	0.00	0.00	1.00	6.76
South Asia																
India	12.09	14.41	13.00	14.41	3.59	3.82	3.62	3.61	43.41	55.09	47.00	52.00	5.00	10.64	-3.09	-5.61
Pakistan	1.44	1.56	1.60	1.60	5.73	6.28	6.13	6.13	8.24	9.80	9.80	9.80	0.00	0.00	0.00	0.00
Nepal	0.92	0.97	0.97	0.97	3.49	3.21	3.21	3.21	3.19	3.10	3.10	3.10	0.00	0.00	0.00	0.00
Southeast Asia																
Indonesia	3.50	3.55	3.55	3.55	3.74	3.75	3.80	3.80	13.10	13.30	13.50	13.50	0.00	0.00	0.20	1.50
Philippines	2.45	2.40	2.45	2.45	3.40	3.40	3.39	3.39	8.33	8.15	8.30	8.30	0.00	0.00	0.15	1.84
Vietnam	0.87	0.84	0.83	0.83	5.05	5.03	4.97	4.97	4.40	4.20	4.10	4.10	0.00	0.00	-0.10	-2.38
Thailand	1.21	1.22	1.20	1.20	4.38	4.43	4.42	4.42	5.30	5.40	5.30	5.30	0.00	0.00	-0.10	-1.85
Mexico	6.50	6.70	6.40	6.40	3.55	3.73	3.84	3.84	23.10	25.00	24.60	24.60	0.00	0.00	-0.40	-1.60
Canada	1.45	1.46	1.40	1.40	10.59	10.18	10.36	10.36	15.35	14.87	14.50	14.50	0.00	0.00	-0.37	-2.47
Turkey	0.56	0.61	0.55	0.55	12.14	12.95	12.91	12.91	6.80	7.90	7.10	7.10	0.00	0.00	-0.80	-10.13
Others	28.87	28.84	28.57	28.57	2.58	2.56	2.64	2.64	74.46	73.82	75.34	75.34	0.00	0.00	1.52	2.06

World and Selected Countries and Regions

Table 05 Barley Area, Yield, and Production

Country / Region	Area (Million hectares)				Yield (Metric tons per hectare)				Production (Million metric tons)				Change in Production						
	2024/25	Prel.		2026/27 Proj.		2024/25	Prel.		2026/27 Proj.		2024/25	Prel.		2026/27 Proj.		From last month		From last year	
		2025/26	May	Jun	2025/26		May	Jun	2025/26	May		Jun	MMT	Percent	MMT	Percent			
World	45.74	44.43	46.43	46.28	3.14	3.48	3.34	3.36	143.39	154.50	155.03	155.46	0.44	0.28	0.97	0.63			
United States	0.76	0.71	0.77	0.77	4.12	4.30	4.22	4.22	3.15	3.07	3.24	3.24	0.00	0.00	0.18	5.77			
Total Foreign	44.97	43.72	45.66	45.51	3.12	3.46	3.32	3.34	140.24	151.43	151.78	152.22	0.44	0.29	0.79	0.52			
European Union	10.23	10.02	10.15	10.15	4.94	5.63	5.24	5.24	50.52	56.39	53.15	53.15	0.00	0.00	-3.24	-5.74			
United Kingdom	1.09	1.07	1.05	1.05	6.47	6.07	5.90	5.90	7.05	6.50	6.20	6.20	0.00	0.00	-0.30	-4.62			
Former Soviet Union - 12																			
Russia	6.60	6.40	6.50	6.50	2.46	3.03	2.85	2.85	16.25	19.40	18.50	18.50	0.00	0.00	-0.90	-4.64			
Ukraine	1.60	1.55	1.45	1.45	3.63	3.61	3.66	3.79	5.80	5.60	5.30	5.50	0.20	3.77	-0.10	-1.79			
Kazakhstan	2.28	2.28	2.35	2.35	1.68	1.57	1.36	1.36	3.84	3.59	3.20	3.20	0.00	0.00	-0.39	-10.94			
Belarus	0.37	0.35	0.33	0.33	2.97	3.57	3.64	3.64	1.10	1.25	1.20	1.20	0.00	0.00	-0.05	-4.00			
Azerbaijan	0.36	0.37	0.37	0.37	3.06	2.97	3.01	3.01	1.10	1.10	1.12	1.12	0.00	0.00	0.02	1.36			
Canada	2.39	2.28	2.45	2.45	3.40	4.27	3.67	3.67	8.14	9.73	9.00	9.00	0.00	0.00	-0.73	-7.46			
Australia	4.62	4.77	5.10	5.10	2.87	3.48	2.76	2.76	13.27	16.63	14.10	14.10	0.00	0.00	-2.53	-15.19			
Middle East																			
Turkey	3.75	3.50	3.75	3.75	1.87	1.46	2.21	2.35	7.00	5.10	8.30	8.80	0.50	6.02	3.70	72.55			
Iran	1.60	1.65	1.65	1.65	1.94	1.82	2.12	2.12	3.10	3.00	3.50	3.50	0.00	0.00	0.50	16.67			
Iraq	1.00	0.60	0.70	0.70	1.40	1.08	1.60	1.60	1.40	0.65	1.12	1.12	0.00	0.00	0.47	72.31			
Syria	1.10	1.00	1.20	1.20	1.09	0.35	1.79	1.92	1.20	0.35	2.15	2.30	0.15	6.98	1.95	557.14			
Africa																			
Ethiopia	0.96	0.97	0.99	0.99	2.40	2.47	2.53	2.53	2.30	2.40	2.50	2.50	0.00	0.00	0.10	4.17			
Morocco	0.80	0.80	1.10	1.10	0.83	1.19	2.18	2.18	0.66	0.95	2.40	2.40	0.00	0.00	1.45	152.63			
Algeria	1.03	1.03	1.10	1.10	1.17	1.32	1.82	1.82	1.20	1.35	2.00	2.00	0.00	0.00	0.65	48.15			
Tunisia	0.23	0.29	0.30	0.30	1.21	2.28	2.33	2.33	0.27	0.66	0.70	0.70	0.00	0.00	0.04	6.06			
South Africa	0.10	0.10	0.10	0.10	3.68	3.56	3.50	3.50	0.37	0.35	0.35	0.35	0.00	0.00	0.01	1.45			
South America																			
Argentina	1.31	1.21	1.32	1.32	3.67	4.67	4.02	4.02	4.82	5.63	5.30	5.30	0.00	0.00	-0.33	-5.93			
Uruguay	0.27	0.17	0.23	0.23	4.32	4.85	5.11	5.11	1.17	0.80	1.15	1.15	0.00	0.00	0.35	43.75			
Brazil	0.12	0.14	0.14	0.14	3.56	4.37	3.93	3.93	0.44	0.61	0.55	0.55	0.00	0.00	-0.06	-9.39			
India	0.55	0.61	0.72	0.57	3.08	3.16	3.19	3.17	1.70	1.92	2.30	1.80	-0.50	-21.91	-0.12	-6.41			
China	0.50	0.56	0.56	0.56	4.00	4.11	4.11	4.11	2.00	2.30	2.30	2.30	0.00	0.00	0.00	0.00			
Mexico	0.32	0.29	0.30	0.30	2.83	2.77	2.83	2.83	0.89	0.79	0.85	0.85	0.00	0.00	0.06	7.59			
Afghanistan	0.10	0.07	0.07	0.07	1.88	1.54	1.54	1.62	0.19	0.10	0.10	0.11	0.01	5.00	0.01	5.00			
Others	1.68	1.67	1.69	1.69	2.65	2.58	2.63	2.68	4.46	4.29	4.45	4.53	0.09	1.91	0.24	5.61			

World and Selected Countries and Regions

Table 06 Oats Area, Yield, and Production

Country / Region	Area (Million hectares)				Yield (Metric tons per hectare)				Production (Million metric tons)				Change in Production			
	2024/25	Prel.	2026/27 Proj.		2024/25	Prel.	2026/27 Proj.		2024/25	Prel.	2026/27 Proj.		From last month		From last year	
		2025/26	May	Jun		2025/26	May	Jun		2025/26	May	Jun	MMT	Percent	MMT	Percent
World	8.69	9.11	8.75	8.87	2.59	2.80	2.60	2.61	22.49	25.47	22.75	23.15	0.40	1.76	-2.32	-9.11
United States	0.36	0.38	0.32	0.32	2.74	2.65	2.46	2.46	0.99	1.01	0.80	0.80	0.00	0.00	-0.21	-21.07
Total Foreign	8.33	8.73	8.42	8.55	2.58	2.80	2.61	2.62	21.50	24.46	21.96	22.36	0.40	1.82	-2.11	-8.61
European Union	2.46	2.58	2.50	2.50	3.12	3.46	3.20	3.20	7.69	8.92	8.00	8.00	0.00	0.00	-0.92	-10.31
Former Soviet Union - 12																
Russia	1.60	1.70	1.70	1.70	1.88	2.24	1.94	1.94	3.00	3.80	3.30	3.30	0.00	0.00	-0.50	-13.16
Ukraine	0.17	0.14	0.14	0.14	2.71	2.86	2.71	2.71	0.46	0.40	0.38	0.38	0.00	0.00	-0.02	-5.00
Belarus	0.16	0.15	0.15	0.15	2.06	2.33	2.27	2.27	0.32	0.35	0.34	0.34	0.00	0.00	-0.01	-2.86
Kazakhstan	0.19	0.18	0.19	0.19	1.71	1.57	1.21	1.21	0.33	0.27	0.23	0.23	0.00	0.00	-0.04	-16.06
Canada	0.99	1.05	0.93	0.93	3.38	3.74	3.55	3.55	3.36	3.92	3.30	3.30	0.00	0.00	-0.62	-15.82
South America																
Argentina	0.30	0.30	0.30	0.30	1.87	1.75	1.67	1.67	0.56	0.53	0.50	0.50	0.00	0.00	-0.03	-4.76
Brazil	0.49	0.55	0.52	0.52	2.14	2.37	2.21	2.21	1.04	1.29	1.15	1.15	0.00	0.00	-0.14	-10.99
Chile	0.10	0.09	0.10	0.10	4.75	5.00	4.74	4.74	0.48	0.45	0.45	0.45	0.00	0.00	0.00	0.00
Uruguay	0.03	0.02	0.02	0.02	2.37	2.33	2.35	2.35	0.06	0.04	0.04	0.04	0.00	0.00	0.01	14.29
Oceania																
Australia	0.74	0.87	0.78	0.90	1.77	1.96	1.81	2.00	1.32	1.70	1.40	1.80	0.40	28.57	0.11	6.19
New Zealand	0.00	0.01	0.01	0.01	5.75	6.00	6.00	6.00	0.02	0.03	0.03	0.03	0.00	0.00	0.00	0.00
China	0.47	0.47	0.47	0.47	1.83	1.83	1.83	1.83	0.85	0.85	0.85	0.85	0.00	0.00	0.00	0.00
Africa																
Algeria	0.08	0.08	0.08	0.08	1.31	1.31	1.31	1.31	0.11	0.11	0.11	0.11	0.00	0.00	0.00	0.00
Morocco	0.02	0.02	0.02	0.02	0.40	0.40	0.40	0.40	0.01	0.01	0.01	0.01	0.00	0.00	0.00	0.00
South Africa	0.03	0.04	0.04	0.04	1.39	1.22	1.50	1.50	0.04	0.04	0.06	0.06	0.00	0.00	0.02	36.36
Other Europe																
United Kingdom	0.20	0.20	0.18	0.18	4.93	4.36	5.00	5.00	0.99	0.85	0.90	0.90	0.00	0.00	0.05	5.88
Norway	0.07	0.07	0.07	0.07	4.29	4.29	4.29	4.29	0.30	0.30	0.30	0.30	0.00	0.00	0.00	0.00
Serbia	0.02	0.02	0.02	0.02	3.00	3.00	3.00	3.00	0.06	0.06	0.06	0.06	0.00	0.00	0.00	0.00
Albania	0.02	0.02	0.02	0.02	2.27	2.27	2.27	2.27	0.03	0.03	0.03	0.03	0.00	0.00	0.00	0.00
Bosnia and Herzegovina	0.01	0.01	0.01	0.01	3.43	3.38	3.38	3.38	0.02	0.03	0.03	0.03	0.00	0.00	0.00	0.00
Turkey	0.13	0.14	0.14	0.14	2.62	2.59	2.59	2.59	0.34	0.35	0.35	0.35	0.00	0.00	0.00	0.00
Mexico	0.04	0.05	0.05	0.05	2.03	2.11	2.11	2.11	0.08	0.10	0.10	0.10	0.00	0.00	0.00	0.00
Others	0.03	0.03	0.03	0.03	1.78	1.72	1.78	1.78	0.05	0.05	0.05	0.05	0.00	0.00	0.00	-4.00

World and Selected Countries and Regions

Table 07 Rye Area, Yield, and Production

Country / Region	Area (Million hectares)				Yield (Metric tons per hectare)				Production (Million metric tons)				Change in Production						
	2024/25	Prel.		2026/27 Proj.		2024/25	Prel.		2026/27 Proj.		2024/25	Prel.		2026/27 Proj.		From last month		From last year	
		2025/26	May	Jun	2025/26		May	Jun	2025/26	May		Jun	MMT	Percent	MMT	Percent			
World	3.34	3.07	3.08	3.08	3.19	3.69	3.44	3.44	10.64	11.34	10.62	10.62	0.00	0.00	-0.72	-6.32			
United States	0.16	0.14	0.12	0.12	2.29	2.29	2.34	2.34	0.37	0.32	0.28	0.28	0.00	0.00	-0.03	-10.44			
Total Foreign	3.18	2.93	2.96	2.96	3.23	3.76	3.49	3.49	10.27	11.02	10.34	10.34	0.00	0.00	-0.68	-6.20			
European Union	1.72	1.63	1.65	1.65	4.03	4.76	4.36	4.36	6.91	7.75	7.20	7.20	0.00	0.00	-0.55	-7.08			
Former Soviet Union - 12																			
Russia	0.58	0.41	0.40	0.40	2.07	2.44	2.25	2.25	1.20	1.00	0.90	0.90	0.00	0.00	-0.10	-10.00			
Belarus	0.34	0.34	0.33	0.33	2.35	2.24	2.27	2.27	0.80	0.76	0.75	0.75	0.00	0.00	-0.01	-1.32			
Ukraine	0.07	0.07	0.09	0.09	3.14	3.23	3.18	3.18	0.22	0.21	0.27	0.27	0.00	0.00	0.06	28.57			
Kazakhstan	0.02	0.02	0.03	0.03	1.55	1.55	1.33	1.33	0.03	0.03	0.04	0.04	0.00	0.00	0.01	29.03			
Turkey	0.11	0.11	0.11	0.11	2.91	2.86	2.86	2.86	0.32	0.30	0.30	0.30	0.00	0.00	0.00	0.00			
Canada	0.12	0.16	0.15	0.15	3.60	3.93	3.45	3.45	0.42	0.61	0.50	0.50	0.00	0.00	-0.11	-18.43			
South America																			
Argentina	0.13	0.11	0.12	0.12	1.69	1.73	1.75	1.75	0.22	0.19	0.21	0.21	0.00	0.00	0.02	10.53			
Other Europe																			
Bosnia and Herzegovina	0.00	0.00	0.00	0.00	3.00	3.00	3.00	3.00	0.01	0.01	0.01	0.01	0.00	0.00	0.00	0.00			
Switzerland	0.00	0.00	0.00	0.00	5.00	5.00	5.00	5.00	0.01	0.01	0.01	0.01	0.00	0.00	0.00	0.00			
Serbia	0.01	0.01	0.01	0.01	3.00	3.00	3.00	3.00	0.02	0.02	0.02	0.02	0.00	0.00	0.00	0.00			
Australia	0.05	0.05	0.05	0.05	0.71	0.71	0.71	0.71	0.03	0.03	0.03	0.03	0.00	0.00	0.00	0.00			
Others	0.04	0.04	0.04	0.04	2.12	2.38	2.38	2.38	0.09	0.10	0.10	0.10	0.00	0.00	0.00	0.00			

World and Selected Countries and Regions

Table 08 Sorghum Area, Yield, and Production

Country / Region	Area (Million hectares)				Yield (Metric tons per hectare)				Production (Million metric tons)				Change in Production			
	Prel.		2026/27 Proj.		Prel.		2026/27 Proj.		Prel.		2026/27 Proj.		From last month		From last year	
	2024/25	2025/26	May	Jun	2024/25	2025/26	May	Jun	2024/25	2025/26	May	Jun	MMT	Percent	MMT	Percent
World	39.36	39.21	40.32	40.32	1.59	1.55	1.55	1.55	62.64	60.92	62.68	62.68	0.00	0.00	1.76	2.88
United States	2.27	2.44	2.15	2.15	3.85	4.56	4.35	4.35	8.73	11.10	9.32	9.32	0.00	0.00	-1.77	-15.99
Total Foreign	37.09	36.77	38.17	38.17	1.45	1.36	1.40	1.40	53.90	49.83	53.36	53.36	0.00	0.00	3.53	7.09
Africa																
Nigeria	5.25	5.32	5.70	5.70	1.22	1.22	1.23	1.23	6.42	6.50	7.00	7.00	0.00	0.00	0.50	7.69
Ethiopia	1.65	1.60	1.65	1.65	2.48	2.44	2.48	2.48	4.10	3.90	4.10	4.10	0.00	0.00	0.20	5.13
Sudan	6.00	6.00	6.00	6.00	0.55	0.50	0.50	0.50	3.30	3.00	3.00	3.00	0.00	0.00	0.00	0.00
Burkina Faso	1.90	1.90	1.90	1.90	1.11	1.00	1.00	1.00	2.10	1.90	1.90	1.90	0.00	0.00	0.00	0.00
Mali	1.69	1.60	1.60	1.60	0.97	1.11	1.00	1.00	1.64	1.78	1.60	1.60	0.00	0.00	-0.18	-9.86
Niger	3.43	3.70	3.70	3.70	0.56	0.47	0.51	0.51	1.91	1.74	1.90	1.90	0.00	0.00	0.17	9.51
Cameroon	0.74	0.74	0.74	0.74	1.62	1.62	1.62	1.62	1.20	1.20	1.20	1.20	0.00	0.00	0.00	0.00
Tanzania	0.75	0.75	0.75	0.75	1.07	1.00	1.00	1.00	0.80	0.75	0.75	0.75	0.00	0.00	0.00	0.00
Egypt	0.15	0.15	0.15	0.15	5.27	5.20	5.23	5.23	0.79	0.78	0.79	0.79	0.00	0.00	0.01	0.64
Uganda	0.32	0.32	0.32	0.32	0.70	0.84	0.84	0.84	0.23	0.27	0.27	0.27	0.00	0.00	0.00	0.00
Ghana	0.31	0.31	0.31	0.31	1.55	1.29	1.29	1.29	0.48	0.40	0.40	0.40	0.00	0.00	0.00	0.00
Mozambique	0.24	0.28	0.28	0.28	0.61	0.55	0.55	0.55	0.15	0.15	0.15	0.15	0.00	0.00	0.00	0.00
South Africa	0.04	0.05	0.04	0.04	3.54	3.11	3.25	3.25	0.15	0.14	0.13	0.13	0.00	0.00	-0.01	-7.14
Mexico	1.20	1.00	1.10	1.10	3.50	3.20	3.45	3.45	4.20	3.20	3.80	3.80	0.00	0.00	0.60	18.75
South America																
Argentina	0.71	0.58	0.75	0.75	4.02	4.17	4.27	4.27	2.85	2.40	3.20	3.20	0.00	0.00	0.80	33.33
Brazil	1.63	1.65	2.00	2.00	3.74	3.15	3.25	3.25	6.10	5.20	6.50	6.50	0.00	0.00	1.30	25.00
South Asia																
India	4.00	3.55	4.00	4.00	1.24	1.23	1.18	1.18	4.96	4.36	4.70	4.70	0.00	0.00	0.34	7.90
Pakistan	0.05	0.05	0.05	0.05	0.83	0.82	0.80	0.80	0.04	0.04	0.04	0.04	0.00	0.00	0.00	-2.44
China	0.63	0.65	0.65	0.65	4.76	4.77	4.77	4.77	3.00	3.10	3.10	3.10	0.00	0.00	0.00	0.00
Australia	0.59	0.65	0.60	0.60	4.57	3.85	3.50	3.50	2.69	2.50	2.10	2.10	0.00	0.00	-0.40	-16.00
European Union	0.21	0.20	0.22	0.22	4.51	4.31	4.70	4.70	0.97	0.85	1.01	1.01	0.00	0.00	0.16	18.41
Others	5.61	5.74	5.67	5.67	1.04	0.99	1.01	1.01	5.85	5.68	5.72	5.72	0.00	0.00	0.05	0.81

World and Selected Countries and Regions

Table 09 Rice Area, Yield, and Production
World and Selected Countries and Regions

Country / Region	Area (Million hectares)				Yield (Metric tons per hectare)				Production (Million metric tons)				Change in Production			
	Prel.		2026/27 Proj.		Prel.		2026/27 Proj.		Prel.		2026/27 Proj.		From last month		From last year	
	2024/25	2025/26	May	Jun	2024/25	2025/26	May	Jun	2024/25	2025/26	May	Jun	MMT	Percent	MMT	Percent
World	172.74	173.55	170.83	170.83	4.69	4.69	4.71	4.71	542.03	544.74	537.82	537.82	0.00	0.00	-6.92	-1.27
United States	1.16	1.11	0.92	0.92	8.69	8.45	8.67	8.67	7.05	6.56	5.56	5.56	0.00	0.00	-1.00	-15.24
Total Foreign	171.58	172.44	169.92	169.92	4.66	4.67	4.68	4.68	534.98	538.18	532.26	532.26	0.00	0.00	-5.92	-1.10
East Asia																
China	29.01	29.00	29.00	29.00	7.15	7.21	7.24	7.24	145.28	146.33	147.00	147.00	0.00	0.00	0.67	0.46
Japan	1.46	1.47	1.46	1.46	6.87	6.99	6.95	6.95	7.29	7.48	7.38	7.38	0.00	0.00	-0.10	-1.39
Korea, South	0.70	0.68	0.67	0.67	6.85	6.94	6.99	6.99	3.59	3.54	3.52	3.52	0.00	0.00	-0.02	-0.56
Korea, North	0.54	0.54	0.54	0.54	4.18	4.18	4.18	4.18	1.48	1.48	1.48	1.48	0.00	0.00	0.00	0.00
South Asia																
India	51.27	52.83	51.50	51.50	4.39	4.37	4.37	4.37	150.18	154.02	150.00	150.00	0.00	0.00	-4.02	-2.61
Bangladesh	11.40	11.75	11.80	11.80	4.82	4.81	4.75	4.75	36.60	37.65	37.40	37.40	0.00	0.00	-0.25	-0.66
Pakistan	3.90	3.60	3.60	3.60	3.74	3.92	4.00	4.00	9.72	9.40	9.60	9.60	0.00	0.00	0.20	2.13
Nepal	1.42	1.38	1.40	1.40	4.19	4.14	4.18	4.18	3.97	3.80	3.90	3.90	0.00	0.00	0.10	2.63
Sri Lanka	1.13	1.15	1.15	1.15	4.18	4.22	4.28	4.28	3.21	3.30	3.35	3.35	0.00	0.00	0.05	1.52
Southeast Asia																
Indonesia	11.40	11.30	11.20	11.20	4.71	4.71	4.72	4.72	34.10	33.80	33.60	33.60	0.00	0.00	-0.20	-0.59
Vietnam	7.02	6.80	6.70	6.70	6.12	6.16	6.23	6.23	26.85	26.20	26.10	26.10	0.00	0.00	-0.10	-0.38
Thailand	11.08	11.00	10.90	10.90	2.85	2.85	2.82	2.82	20.84	20.70	20.30	20.30	0.00	0.00	-0.40	-1.93
Burma	6.86	6.83	6.50	6.50	2.71	2.75	2.64	2.64	11.90	12.00	11.00	11.00	0.00	0.00	-1.00	-8.33
Philippines	4.70	4.70	4.70	4.70	4.18	4.12	4.19	4.19	12.37	12.20	12.40	12.40	0.00	0.00	0.20	1.64
Cambodia	3.86	3.80	3.75	3.75	3.61	3.54	3.50	3.50	8.50	8.20	8.00	8.00	0.00	0.00	-0.20	-2.44
Laos	0.91	0.96	0.95	0.95	3.30	3.22	3.17	3.17	1.90	1.95	1.90	1.90	0.00	0.00	-0.05	-2.56
Malaysia	0.59	0.59	0.60	0.60	4.11	4.17	4.23	4.23	1.58	1.60	1.65	1.65	0.00	0.00	0.05	3.13
South America																
Brazil	1.76	1.60	1.50	1.50	7.23	6.99	7.25	7.25	8.68	7.60	7.40	7.40	0.00	0.00	-0.20	-2.63
Peru	0.43	0.43	0.43	0.43	8.21	8.76	8.43	8.43	2.46	2.60	2.50	2.50	0.00	0.00	-0.10	-3.85
Africa																
Egypt	0.67	0.72	0.72	0.72	8.44	8.45	8.45	8.45	3.90	4.20	4.20	4.20	0.00	0.00	0.00	0.00
Madagascar	1.90	1.75	1.80	1.80	2.74	2.40	2.33	2.33	3.33	2.69	2.69	2.69	0.00	0.00	0.00	0.00
Nigeria	4.57	4.50	4.00	4.00	2.00	2.08	2.25	2.25	5.75	5.90	5.67	5.67	0.00	0.00	-0.23	-3.96
European Union	0.39	0.42	0.42	0.42	6.73	6.71	7.10	7.10	1.60	1.77	1.73	1.73	0.00	0.00	-0.05	-2.54
Iran	0.57	0.57	0.57	0.57	5.32	5.32	5.32	5.32	2.00	2.00	2.00	2.00	0.00	0.00	0.00	0.00
Others	14.03	14.08	14.06	14.06	3.02	3.00	2.97	2.97	27.92	27.76	27.50	27.50	0.00	0.00	-0.27	-0.97

Yield is on a rough basis, before the milling process. Production is on a milled basis, after the milling process.

Table 10 Total Oilseed Area, Yield, and Production
World and Selected Countries and Regions

Country / Region	Area (Million hectares)				Yield (Metric tons per hectare)				Production (Million metric tons)				Change in Production			
	2024/25	Prel.	2026/27 Proj.		2024/25	Prel.	2026/27 Proj.		2024/25	Prel.	2026/27 Proj.		From last month		From last year	
		2025/26	May	Jun		2025/26	May	Jun		2025/26	May	Jun	MMT	Percent	MMT	Percent
World Total	--	--	--	--	--	--	--	--	686.70	700.65	718.10	718.19	0.09	0.01	17.54	2.50
Total Foreign	--	--	--	--	--	--	--	--	558.11	574.47	587.72	587.81	0.09	0.02	13.33	2.32
Oilseed, Copra	--	--	--	--	--	--	--	--	6.12	5.92	5.96	5.96	0.00	0.00	0.04	0.71
Oilseed, Palm Kernel	--	--	--	--	--	--	--	--	20.35	21.11	21.09	21.09	0.00	0.00	-0.02	-0.11
Major Oilseeds	276.82	276.08	280.83	280.93	2.39	2.44	2.46	2.46	660.24	673.62	691.05	691.14	0.09	0.01	17.52	2.60
United States	40.11	37.94	39.10	39.10	3.21	3.33	3.33	3.33	128.59	126.17	130.38	130.38	0.00	0.00	4.20	3.33
Foreign Oilseeds	236.70	238.14	241.73	241.83	2.25	2.30	2.32	2.32	531.64	547.44	560.67	560.76	0.09	0.02	13.32	2.43
South America	78.34	78.96	81.66	81.66	3.29	3.37	3.34	3.34	257.70	266.29	272.51	272.51	0.00	0.00	6.22	2.33
Brazil	49.69	51.02	52.35	52.35	3.61	3.68	3.69	3.69	179.40	187.78	193.11	193.11	0.00	0.00	5.33	2.84
Argentina	21.04	20.20	21.57	21.57	2.81	2.93	2.79	2.79	59.10	59.11	60.09	60.09	0.00	0.00	0.98	1.66
Paraguay	3.92	3.97	3.92	3.92	2.67	3.12	2.88	2.88	10.44	12.35	11.28	11.28	0.00	0.00	-1.08	-8.72
Bolivia	2.13	2.15	2.28	2.28	1.90	1.98	1.93	1.93	4.04	4.25	4.38	4.38	0.00	0.00	0.13	3.06
Uruguay	1.47	1.51	1.44	1.44	3.02	1.64	2.33	2.33	4.42	2.48	3.34	3.34	0.00	0.00	0.86	34.57
China	26.08	26.46	26.49	26.49	2.60	2.62	2.62	2.62	67.81	69.37	69.34	69.34	0.00	0.00	-0.03	-0.05
South Asia	42.89	42.90	42.66	42.66	1.08	1.06	1.09	1.09	46.36	45.43	46.62	46.62	0.00	0.00	1.19	2.63
India	39.06	39.07	38.78	38.78	1.07	1.04	1.08	1.08	41.80	40.74	41.95	41.95	0.00	0.00	1.21	2.96
Pakistan	2.61	2.65	2.64	2.64	1.11	1.16	1.13	1.13	2.89	3.08	2.97	2.97	0.00	0.00	-0.11	-3.54
European Union	11.90	12.08	12.55	12.55	2.44	2.68	2.71	2.69	29.03	32.42	33.99	33.79	-0.20	-0.59	1.37	4.22
United Kingdom	0.29	0.24	0.31	0.31	2.85	3.71	3.55	3.55	0.84	0.89	1.10	1.10	0.00	0.00	0.21	23.18
Former Soviet Union - 12	31.26	32.17	33.77	33.87	1.88	1.86	1.93	1.93	58.91	59.69	65.18	65.45	0.27	0.41	5.76	9.64
Russia	16.45	17.90	18.90	19.00	1.74	1.79	1.81	1.81	28.60	32.00	34.20	34.30	0.10	0.29	2.30	7.19
Ukraine	10.35	9.25	9.75	9.75	2.32	2.16	2.39	2.41	24.00	20.00	23.30	23.45	0.15	0.64	3.45	17.25
Uzbekistan	1.01	0.89	0.92	0.92	1.20	1.57	1.47	1.47	1.21	1.39	1.34	1.34	0.00	0.00	-0.05	-3.66
Canada	11.16	11.05	11.78	11.78	2.41	2.61	2.49	2.49	26.90	28.86	29.37	29.36	-0.01	-0.04	0.49	1.71
Africa	24.62	24.15	22.73	22.73	1.02	1.05	1.08	1.08	25.22	25.37	24.47	24.52	0.05	0.20	-0.85	-3.37
Nigeria	6.02	6.06	5.80	5.80	1.10	1.14	1.17	1.17	6.64	6.89	6.80	6.80	0.00	0.00	-0.09	-1.32
South Africa	1.94	2.02	2.05	2.05	2.02	2.08	1.91	1.93	3.91	4.21	3.92	3.97	0.05	1.28	-0.25	-5.84
Tanzania	1.39	1.39	0.95	0.95	0.66	0.67	0.80	0.80	0.91	0.93	0.76	0.76	0.00	0.00	-0.17	-18.63
Southeast Asia	3.05	3.01	2.95	2.95	1.40	1.39	1.39	1.39	4.25	4.20	4.09	4.09	0.00	0.00	-0.11	-2.55
Burma	1.98	1.98	1.95	1.95	1.27	1.27	1.26	1.26	2.52	2.52	2.46	2.46	0.00	0.00	-0.06	-2.38
Indonesia	0.81	0.78	0.75	0.75	1.46	1.45	1.45	1.45	1.18	1.13	1.09	1.09	0.00	0.00	-0.04	-3.63
Australia	4.10	4.23	4.09	4.09	1.93	2.11	1.88	1.88	7.90	8.91	7.67	7.67	0.00	0.00	-1.24	-13.93
Turkey	1.29	1.28	1.20	1.20	2.45	2.15	2.50	2.50	3.15	2.75	3.00	3.00	0.00	0.00	0.25	9.25
Others	1.72	1.61	1.56	1.55	2.08	2.02	2.15	2.14	3.59	3.26	3.34	3.32	-0.02	-0.57	0.06	1.84

World Total and Total Foreign: (Major Oilseeds plus copra and palm kernel) Major Oilseeds: (soybeans, sunflowerseeds, peanuts(inshell), cottonseed and rapeseed)

Table 11 Soybean Area, Yield, and Production

Country / Region	Area (Million hectares)				Yield (Metric tons per hectare)				Production (Million metric tons)				Change in Production			
	2024/25	Prel.	2026/27 Proj.		2024/25	Prel.	2026/27 Proj.		2024/25	Prel.	2026/27 Proj.		From last month		From last year	
		2025/26	May	Jun		2025/26	May	Jun		2025/26	May	Jun	MMT	Percent	MMT	Percent
World	146.21	142.84	146.50	146.40	2.93	3.00	3.01	3.01	427.93	429.20	441.54	441.34	-0.20	-0.05	12.14	2.83
United States	34.89	32.55	33.87	33.87	3.41	3.56	3.56	3.56	119.05	115.99	120.70	120.70	0.00	0.00	4.71	4.06
Total Foreign	111.32	110.29	112.63	112.53	2.77	2.84	2.85	2.85	308.88	313.21	320.84	320.64	-0.20	-0.06	7.43	2.37
South America																
Brazil	47.40	48.50	50.00	50.00	3.64	3.71	3.72	3.72	172.50	180.00	186.00	186.00	0.00	0.00	6.00	3.33
Argentina	17.46	16.30	17.10	17.10	2.93	3.07	2.92	2.92	51.11	50.00	50.00	50.00	0.00	0.00	0.00	0.00
Paraguay	3.75	3.80	3.80	3.80	2.72	3.18	2.92	2.92	10.20	12.10	11.10	11.10	0.00	0.00	-1.00	-8.26
Bolivia	1.88	1.90	2.00	2.00	1.97	2.05	2.00	2.00	3.70	3.90	4.00	4.00	0.00	0.00	0.10	2.56
Uruguay	1.36	1.30	1.30	1.30	3.12	1.62	2.38	2.38	4.24	2.10	3.10	3.10	0.00	0.00	1.00	47.62
East Asia																
China	10.33	10.30	10.30	10.30	2.00	2.03	2.04	2.04	20.65	20.90	21.00	21.00	0.00	0.00	0.10	0.48
Korea, South	0.07	0.07	0.07	0.07	2.09	2.11	2.11	2.11	0.16	0.16	0.15	0.15	0.00	0.00	0.00	-1.28
Korea, North	0.16	0.16	0.16	0.16	1.15	1.15	1.15	1.15	0.18	0.18	0.18	0.18	0.00	0.00	0.00	0.00
Japan	0.15	0.14	0.15	0.15	1.64	1.70	1.63	1.63	0.25	0.24	0.25	0.25	0.00	0.00	0.01	2.51
India	13.00	12.39	12.00	12.00	0.99	0.89	0.96	0.96	12.88	11.03	11.50	11.50	0.00	0.00	0.47	4.29
Canada	2.29	2.32	2.35	2.35	3.32	2.93	3.11	3.11	7.61	6.79	7.30	7.30	0.00	0.00	0.51	7.46
Former Soviet Union - 12																
Russia	4.20	4.50	4.70	4.60	1.68	2.00	1.91	1.91	7.05	9.00	9.00	8.80	-0.20	-2.22	-0.20	-2.22
Ukraine	3.00	2.30	2.25	2.25	2.40	2.39	2.49	2.49	7.20	5.50	5.60	5.60	0.00	0.00	0.10	1.82
European Union	1.12	1.06	1.10	1.10	2.60	2.68	2.73	2.73	2.91	2.85	3.00	3.00	0.00	0.00	0.15	5.12
Southeast Asia																
Indonesia	0.31	0.29	0.27	0.27	1.13	1.10	1.07	1.07	0.35	0.32	0.29	0.29	0.00	0.00	-0.03	-9.38
Vietnam	0.03	0.03	0.02	0.02	1.65	1.64	1.67	1.67	0.04	0.04	0.04	0.04	0.00	0.00	0.00	-2.44
Thailand	0.03	0.03	0.03	0.03	1.63	1.65	1.65	1.65	0.05	0.05	0.05	0.05	0.00	0.00	0.00	0.00
Burma	0.12	0.12	0.12	0.12	1.22	1.22	1.22	1.22	0.14	0.14	0.14	0.14	0.00	0.00	0.00	0.00
Serbia	0.24	0.18	0.24	0.24	2.00	1.67	2.11	2.11	0.47	0.30	0.50	0.50	0.00	0.00	0.20	65.00
Mexico	0.13	0.15	0.15	0.15	2.07	2.10	2.10	2.10	0.28	0.31	0.32	0.32	0.00	0.00	0.01	3.28
Africa																
South Africa	1.15	1.22	1.26	1.26	2.43	2.40	2.23	2.23	2.80	2.91	2.80	2.80	0.00	0.00	-0.11	-3.78
Nigeria	1.35	1.40	1.40	1.40	1.04	1.07	1.07	1.07	1.40	1.50	1.50	1.50	0.00	0.00	0.00	0.00
Zambia	0.16	0.26	0.26	0.26	1.08	1.12	1.31	1.31	0.17	0.29	0.34	0.34	0.00	0.00	0.05	17.65
Uganda	0.21	0.21	0.21	0.21	0.71	0.71	0.71	0.71	0.15	0.15	0.15	0.15	0.00	0.00	0.00	0.00
Middle East																
Iran	0.07	0.07	0.07	0.07	2.43	2.43	2.43	2.43	0.17	0.17	0.17	0.17	0.00	0.00	0.00	0.00
Turkey	0.04	0.04	0.04	0.04	3.95	3.95	4.10	4.10	0.15	0.15	0.16	0.16	0.00	0.00	0.01	6.67
Others	1.33	1.27	1.29	1.29	1.56	1.68	1.71	1.71	2.08	2.14	2.21	2.21	0.00	0.00	0.07	3.28

World and Selected Countries and Regions

Table 12 Cottonseed Area, Yield, and Production

Country / Region	Area (Million hectares)				Yield (Metric tons per hectare)				Production (Million metric tons)				Change in Production			
	2024/25	Prel.	2026/27 Proj.		2024/25	Prel.	2026/27 Proj.		2024/25	Prel.	2026/27 Proj.		From last month		From last year	
		2025/26	May	Jun		2025/26	May	Jun		2025/26	May	Jun	MMT	Percent	MMT	Percent
World	29.52	28.86	26.90	26.90	1.39	1.47	1.46	1.46	41.16	42.39	39.25	39.25	0.00	0.00	-3.14	-7.40
United States	3.14	3.17	2.99	2.99	1.23	1.18	1.23	1.23	3.87	3.75	3.67	3.67	0.00	0.00	-0.08	-2.21
Total Foreign	26.38	25.69	23.91	23.91	1.41	1.50	1.49	1.49	37.29	38.64	35.59	35.59	0.00	0.00	-3.06	-7.91
South Asia																
India	11.48	11.20	11.50	11.50	0.89	0.90	0.89	0.89	10.19	10.10	10.19	10.19	0.00	0.00	0.09	0.84
Pakistan	2.00	2.00	2.00	2.00	1.08	1.15	1.10	1.10	2.17	2.30	2.21	2.21	0.00	0.00	-0.09	-3.79
China	2.90	3.05	3.00	3.00	3.66	3.89	3.70	3.70	10.61	11.87	11.11	11.11	0.00	0.00	-0.76	-6.43
Former Soviet Union - 12																
Uzbekistan	1.00	0.88	0.90	0.90	1.18	1.54	1.44	1.44	1.18	1.35	1.29	1.29	0.00	0.00	-0.06	-4.22
Turkmenistan	0.50	0.52	0.50	0.50	0.63	0.64	0.63	0.63	0.31	0.33	0.31	0.31	0.00	0.00	-0.02	-6.01
Tajikistan	0.18	0.18	0.18	0.18	1.08	1.15	1.14	1.14	0.20	0.21	0.20	0.20	0.00	0.00	-0.01	-3.86
Kazakhstan	0.11	0.15	0.13	0.13	0.97	0.94	0.94	0.94	0.10	0.14	0.12	0.12	0.00	0.00	-0.02	-14.60
South America																
Brazil	1.95	2.17	2.00	2.00	2.90	2.98	2.91	2.91	5.64	6.47	5.81	5.81	0.00	0.00	-0.66	-10.26
Argentina	0.62	0.38	0.52	0.52	0.85	0.99	1.00	1.00	0.53	0.37	0.52	0.52	0.00	0.00	0.15	40.00
Middle East																
Turkey	0.47	0.40	0.31	0.31	2.77	2.52	2.63	2.63	1.29	1.00	0.82	0.82	0.00	0.00	-0.18	-18.15
Syria	0.03	0.03	0.00	0.00	2.23	2.23	0.00	0.00	0.07	0.07	0.00	0.00	0.00	100.00	-0.07	-100.00
Iran	0.10	0.10	0.00	0.00	1.35	1.35	0.00	0.00	0.14	0.14	0.00	0.00	0.00	100.00	-0.14	-100.00
Australia	0.60	0.47	0.33	0.33	2.34	2.40	2.31	2.31	1.40	1.13	0.75	0.75	0.00	0.00	-0.38	-33.36
European Union	0.28	0.25	0.25	0.25	1.44	1.55	1.56	1.56	0.40	0.39	0.39	0.39	0.00	0.00	0.00	0.00
Africa																
Burkina Faso	0.35	0.39	0.39	0.39	0.44	0.45	0.45	0.45	0.15	0.18	0.18	0.18	0.00	0.00	0.00	0.00
Mali	0.62	0.53	0.54	0.54	0.57	0.43	0.49	0.49	0.36	0.23	0.26	0.26	0.00	0.00	0.03	13.79
Cameroon	0.23	0.20	0.20	0.20	1.18	1.33	1.33	1.33	0.27	0.27	0.27	0.27	0.00	0.00	0.00	0.00
Cote d'Ivoire	0.36	0.29	0.31	0.31	0.44	0.52	0.51	0.51	0.16	0.15	0.16	0.16	0.00	0.00	0.01	4.64
Benin	0.54	0.51	0.51	0.51	0.74	0.75	0.75	0.75	0.40	0.38	0.38	0.38	0.00	0.00	0.00	0.00
Tanzania	0.44	0.44	0.00	0.00	0.35	0.40	0.00	0.00	0.15	0.17	0.00	0.00	0.00	100.00	-0.17	-100.00
Egypt	0.13	0.10	0.00	0.00	0.99	0.99	0.00	0.00	0.13	0.10	0.00	0.00	0.00	100.00	-0.10	-100.00
Nigeria	0.27	0.27	0.00	0.00	0.56	0.56	0.00	0.00	0.15	0.15	0.00	0.00	0.00	100.00	-0.15	-100.00
Uganda	0.07	0.07	0.00	0.00	1.48	1.20	0.00	0.00	0.10	0.08	0.00	0.00	0.00	100.00	-0.08	-100.00
Zimbabwe	0.24	0.24	0.00	0.00	0.34	0.35	0.00	0.00	0.08	0.09	0.00	0.00	0.00	100.00	-0.09	-100.00
Sudan	0.07	0.07	0.00	0.00	1.09	1.09	0.00	0.00	0.08	0.08	0.00	0.00	0.00	100.00	-0.08	-100.00
Mexico	0.13	0.07	0.08	0.08	2.70	2.68	2.78	2.78	0.34	0.19	0.22	0.22	0.00	0.00	0.03	15.03
Burma	0.19	0.19	0.19	0.19	1.24	1.25	1.25	1.25	0.24	0.23	0.23	0.23	0.00	0.00	0.00	0.00
Others	0.55	0.57	0.10	0.10	0.87	0.89	1.86	1.86	0.48	0.50	0.19	0.19	0.00	0.00	-0.32	-62.95

World and Selected Countries and Regions

Table 13 Peanut Area, Yield, and Production

Country / Region	Area (Million hectares)				Yield (Metric tons per hectare)				Production (Million metric tons)				Change in Production			
	Prel.		2026/27 Proj.		Prel.		2026/27 Proj.		Prel.		2026/27 Proj.		From last month		From last year	
	2024/25	2025/26	May	Jun	2024/25	2025/26	May	Jun	2024/25	2025/26	May	Jun	MMT	Percent	MMT	Percent
World	30.32	30.19	30.01	30.01	1.71	1.70	1.72	1.72	51.85	51.20	51.59	51.57	-0.02	-0.04	0.37	0.72
United States	0.71	0.77	0.65	0.65	4.17	4.22	4.20	4.20	2.94	3.26	2.73	2.73	0.00	0.00	-0.52	-16.09
Total Foreign	29.61	29.42	29.36	29.36	1.65	1.63	1.66	1.66	48.91	47.95	48.86	48.84	-0.02	-0.04	0.89	1.86
China	4.85	4.88	4.92	4.92	3.92	3.77	3.82	3.82	19.00	18.40	18.80	18.80	0.00	0.00	0.40	2.17
Africa																
Nigeria	4.40	4.39	4.40	4.40	1.16	1.19	1.20	1.20	5.09	5.24	5.30	5.30	0.00	0.00	0.06	1.13
Sudan	2.45	2.00	2.00	2.00	0.69	0.50	0.50	0.50	1.68	1.00	1.00	1.00	0.00	0.00	0.00	0.00
Senegal	0.78	0.82	0.82	0.82	1.02	1.15	1.15	1.15	0.80	0.94	0.94	0.94	0.00	0.00	0.00	0.00
Cameroon	0.50	0.50	0.50	0.50	1.40	1.40	1.40	1.40	0.70	0.70	0.70	0.70	0.00	0.00	0.00	0.00
Ghana	0.37	0.37	0.37	0.37	1.69	1.62	1.62	1.62	0.63	0.60	0.60	0.60	0.00	0.00	0.00	0.00
Chad	0.75	0.75	0.75	0.75	0.92	1.00	1.00	1.00	0.69	0.75	0.75	0.75	0.00	0.00	0.00	0.00
Malawi	0.40	0.40	0.40	0.40	0.88	1.00	1.00	1.00	0.35	0.40	0.40	0.40	0.00	0.00	0.00	0.00
Congo (Kinshasa)	0.52	0.52	0.52	0.52	0.99	0.93	0.93	0.93	0.51	0.48	0.48	0.48	0.00	0.00	0.00	0.00
Niger	1.04	1.03	1.03	1.03	0.65	0.63	0.63	0.63	0.68	0.65	0.65	0.65	0.00	0.00	0.00	0.00
Mali	0.53	0.50	0.50	0.50	0.94	0.92	0.93	0.93	0.50	0.46	0.46	0.46	0.00	0.00	0.01	1.10
Uganda	0.33	0.33	0.33	0.33	0.53	0.53	0.53	0.53	0.18	0.18	0.18	0.18	0.00	0.00	0.00	0.00
Burkina Faso	0.75	0.75	0.75	0.75	0.81	0.91	0.91	0.91	0.61	0.68	0.68	0.68	0.00	0.00	0.00	0.00
Guinea	0.88	0.88	0.88	0.88	1.14	1.14	1.14	1.14	1.00	1.00	1.00	1.00	0.00	0.00	0.00	0.00
Egypt	0.06	0.06	0.06	0.06	3.20	3.20	3.20	3.20	0.21	0.21	0.21	0.21	0.00	0.00	0.00	0.00
Central African Republic	0.18	0.20	0.20	0.20	2.99	2.88	2.88	2.88	0.55	0.58	0.58	0.58	0.00	0.00	0.00	0.00
South Africa	0.05	0.05	0.05	0.05	1.71	1.78	1.89	1.89	0.08	0.08	0.09	0.09	0.00	0.00	0.01	6.25
Mozambique	0.59	0.45	0.45	0.45	0.30	0.39	0.39	0.39	0.18	0.18	0.18	0.18	0.00	0.00	0.00	0.00
Cote d'Ivoire	0.17	0.17	0.17	0.17	1.80	1.45	1.45	1.45	0.30	0.24	0.24	0.24	0.00	0.00	0.00	0.00
Benin	0.24	0.22	0.22	0.22	0.93	1.00	1.00	1.00	0.22	0.22	0.22	0.22	0.00	0.00	0.00	0.00
South Asia																
India	5.50	5.87	5.70	5.70	1.29	1.28	1.36	1.36	7.10	7.50	7.75	7.75	0.00	0.00	0.25	3.33
Pakistan	0.14	0.14	0.14	0.14	0.90	0.89	0.89	0.89	0.13	0.12	0.13	0.13	0.00	0.00	0.01	4.17
Southeast Asia																
Indonesia	0.50	0.49	0.48	0.48	1.66	1.65	1.67	1.67	0.83	0.81	0.80	0.80	0.00	0.00	-0.01	-1.23
Burma	1.08	1.08	1.05	1.05	1.63	1.63	1.62	1.62	1.75	1.76	1.70	1.70	0.00	0.00	-0.06	-3.41
Vietnam	0.14	0.14	0.14	0.14	2.69	2.68	2.68	2.68	0.39	0.38	0.38	0.38	0.00	0.00	-0.01	-1.32
Thailand	0.02	0.02	0.02	0.02	1.67	1.67	1.67	1.67	0.04	0.04	0.04	0.04	0.00	0.00	0.00	0.00
South America																
Argentina	0.53	0.40	0.42	0.42	3.40	3.25	3.63	3.63	1.81	1.30	1.53	1.53	0.00	0.00	0.23	17.31
Brazil	0.28	0.28	0.29	0.29	4.14	4.29	4.21	4.21	1.16	1.20	1.20	1.20	0.00	0.00	0.00	0.00
Mexico	0.04	0.05	0.04	0.04	1.75	1.76	1.79	1.79	0.07	0.08	0.08	0.08	0.00	0.00	0.00	-5.06
Others	1.54	1.70	1.78	1.77	1.10	1.06	1.03	1.02	1.69	1.79	1.83	1.81	-0.02	-1.04	0.02	1.17

Table 14 Sunflowerseed Area, Yield, and Production

Country / Region	Area (Million hectares)				Yield (Metric tons per hectare)				Production (Million metric tons)				Change in Production						
	2024/25	Prel.		2026/27 Proj.		2024/25	Prel.		2026/27 Proj.		2024/25	Prel.		2026/27 Proj.		From last month		From last year	
		2025/26	May	Jun	2025/26		May	Jun	2025/26	May		Jun	MMT	Percent	MMT	Percent			
World	28.26	30.18	31.89	32.08	1.88	1.83	1.94	1.93	53.02	55.25	61.78	62.06	0.29	0.47	6.81	12.33			
United States	0.28	0.50	0.54	0.54	1.87	2.09	1.99	1.99	0.52	1.05	1.07	1.07	0.00	0.00	0.02	1.52			
Total Foreign	27.98	29.68	31.35	31.55	1.88	1.83	1.94	1.93	52.50	54.20	60.71	61.00	0.29	0.47	6.80	12.54			
Former Soviet Union - 12																			
Russia	9.60	10.50	11.00	11.20	1.76	1.67	1.75	1.74	16.90	17.50	19.20	19.50	0.30	1.56	2.00	11.43			
Ukraine	6.00	5.60	6.00	6.00	2.17	1.96	2.25	2.25	13.00	11.00	13.50	13.50	0.00	0.00	2.50	22.73			
Kazakhstan	1.26	1.77	1.80	1.80	1.46	1.39	1.39	1.39	1.83	2.46	2.50	2.50	0.00	0.00	0.04	1.46			
European Union	4.78	4.63	4.90	4.90	1.81	1.87	2.02	2.02	8.65	8.66	9.90	9.90	0.00	0.00	1.25	14.38			
South America																			
Argentina	2.40	3.10	3.50	3.50	2.33	2.39	2.29	2.29	5.59	7.40	8.00	8.00	0.00	0.00	0.60	8.11			
Uruguay	0.01	0.01	0.01	0.01	1.86	1.20	1.50	1.50	0.01	0.01	0.02	0.02	0.00	0.00	0.00	25.00			
Bolivia	0.25	0.25	0.28	0.28	1.36	1.40	1.38	1.38	0.34	0.35	0.38	0.38	0.00	0.00	0.03	8.57			
Brazil	0.06	0.07	0.07	0.07	1.61	1.57	1.54	1.54	0.10	0.11	0.10	0.10	0.00	0.00	-0.01	-9.09			
Paraguay	0.03	0.03	0.03	0.03	1.60	1.60	1.60	1.60	0.04	0.04	0.04	0.04	0.00	0.00	0.00	0.00			
China	0.60	0.73	0.72	0.72	2.92	3.01	3.10	3.10	1.75	2.20	2.23	2.23	0.00	0.00	0.03	1.36			
South Asia																			
India	0.18	0.18	0.18	0.18	0.63	0.63	0.63	0.63	0.11	0.11	0.11	0.11	0.00	0.00	0.00	0.00			
Pakistan	0.07	0.07	0.07	0.07	1.32	1.32	1.31	1.31	0.09	0.09	0.09	0.09	0.00	0.00	0.00	-1.16			
Middle East																			
Turkey	0.69	0.75	0.76	0.76	1.96	1.67	2.20	2.20	1.35	1.25	1.68	1.68	0.00	0.00	0.43	34.00			
Iran	0.04	0.04	0.04	0.04	1.07	1.07	1.07	1.07	0.05	0.05	0.05	0.05	0.00	0.00	0.00	0.00			
Israel	0.00	0.00	0.00	0.00	4.00	4.00	4.00	4.00	0.00	0.00	0.00	0.00	0.00	0.00	0.00	0.00			
Africa																			
Egypt	0.02	0.02	0.02	0.02	2.50	2.50	2.50	2.50	0.05	0.05	0.05	0.05	0.00	0.00	0.00	0.00			
Morocco	0.02	0.02	0.02	0.02	1.17	1.17	1.17	1.17	0.03	0.03	0.03	0.03	0.00	0.00	0.00	0.00			
South Africa	0.56	0.57	0.56	0.56	1.28	1.54	1.30	1.30	0.71	0.88	0.73	0.73	0.00	0.00	-0.15	-17.05			
Burma	0.60	0.60	0.60	0.60	0.65	0.65	0.65	0.65	0.39	0.39	0.39	0.39	0.00	0.00	0.00	0.00			
Canada	0.02	0.03	0.03	0.03	2.13	2.38	2.27	2.24	0.05	0.07	0.07	0.06	-0.01	-17.65	-0.01	-18.84			
Australia	0.02	0.02	0.03	0.03	1.59	1.50	1.60	1.60	0.04	0.03	0.04	0.04	0.00	0.00	0.01	21.21			
Others	0.78	0.69	0.75	0.75	1.82	2.21	2.15	2.15	1.42	1.52	1.61	1.61	0.00	0.00	0.09	6.18			

World and Selected Countries and Regions

Table 15 Rapeseed Area, Yield, and Production

Country / Region	Area (Million hectares)				Yield (Metric tons per hectare)				Production (Million metric tons)				Change in Production						
	2024/25	Prel.		2026/27 Proj.		2024/25	Prel.		2026/27 Proj.		2024/25	Prel.		2026/27 Proj.		From last month		From last year	
		2025/26	May	Jun	2025/26		May	Jun	2025/26	May		Jun	MMT	Percent	MMT	Percent			
World	42.51	44.01	45.54	45.54	2.03	2.17	2.13	2.13	86.29	95.57	96.89	96.91	0.02	0.02	1.34	1.40			
United States	1.11	0.94	1.06	1.06	2.01	2.26	2.09	2.09	2.22	2.13	2.21	2.21	0.00	0.00	0.08	3.90			
Total Foreign	41.41	43.07	44.48	44.49	2.03	2.17	2.13	2.13	84.07	93.44	94.68	94.70	0.02	0.02	1.26	1.35			
European Union	5.73	6.14	6.30	6.30	2.98	3.34	3.29	3.25	17.07	20.52	20.70	20.50	-0.20	-0.97	-0.02	-0.11			
United Kingdom	0.29	0.24	0.31	0.31	2.85	3.71	3.55	3.55	0.84	0.89	1.10	1.10	0.00	0.00	0.21	23.18			
Switzerland	0.03	0.03	0.03	0.03	3.52	3.52	3.52	3.52	0.09	0.09	0.09	0.09	0.00	0.00	0.00	0.00			
Canada	8.85	8.70	9.40	9.40	2.17	2.53	2.34	2.34	19.24	22.00	22.00	22.00	0.00	0.00	0.00	0.00			
China	7.40	7.50	7.55	7.55	2.14	2.13	2.15	2.15	15.80	16.00	16.20	16.20	0.00	0.00	0.20	1.25			
South Asia																			
India	8.90	9.43	9.40	9.40	1.29	1.27	1.32	1.32	11.52	12.00	12.40	12.40	0.00	0.00	0.40	3.33			
Pakistan	0.40	0.45	0.43	0.43	1.28	1.28	1.28	1.28	0.51	0.58	0.55	0.55	0.00	0.00	-0.03	-4.50			
Bangladesh	1.04	1.00	1.05	1.05	1.30	1.28	1.30	1.30	1.35	1.28	1.36	1.36	0.00	0.00	0.08	6.25			
Former Soviet Union - 12																			
Russia	2.65	2.90	3.20	3.20	1.75	1.90	1.88	1.88	4.65	5.50	6.00	6.00	0.00	0.00	0.50	9.09			
Ukraine	1.35	1.35	1.50	1.50	2.81	2.59	2.80	2.90	3.80	3.50	4.20	4.35	0.15	3.57	0.85	24.29			
Belarus	0.48	0.45	0.49	0.49	2.25	2.11	2.24	2.24	1.08	0.95	1.10	1.10	0.00	0.00	0.15	15.79			
Kazakhstan	0.15	0.32	0.33	0.33	1.92	1.95	1.70	1.70	0.29	0.63	0.56	0.56	0.00	0.00	-0.07	-11.11			
Australia	3.44	3.70	3.70	3.70	1.86	2.07	1.84	1.84	6.40	7.68	6.80	6.80	0.00	0.00	-0.88	-11.46			
South America																			
Chile	0.04	0.04	0.03	0.03	3.86	4.00	3.94	3.94	0.14	0.14	0.13	0.13	0.00	0.00	-0.01	-7.14			
Paraguay	0.08	0.08	0.09	0.09	1.53	1.56	1.50	1.50	0.12	0.13	0.14	0.14	0.00	0.00	0.01	8.00			
Ethiopia	0.03	0.03	0.03	0.03	1.80	1.80	1.80	1.80	0.05	0.05	0.05	0.05	0.00	0.00	0.00	0.00			
Others	0.57	0.72	0.65	0.65	1.99	2.11	2.02	2.12	1.14	1.51	1.31	1.38	0.07	5.34	-0.13	-8.61			

World and Selected Countries and Regions

Table 16 Copra, Palm Kernel, and Palm Oil Production

Country / Region	Production (Million metric tons)				Change in Production			
	2024/25	Prel.	2026/27 Proj.		From last month		From last year	
		2025/26	May	Jun	MMT	Percent	MMT	Percent
Oilseed, Copra								
Philippines	2.81	2.60	2.65	2.65	0.00	0.00	0.05	1.92
Indonesia	1.61	1.62	1.63	1.63	0.00	0.00	0.01	0.62
India	0.94	0.94	0.94	0.94	0.00	0.00	0.00	0.00
Vietnam	0.31	0.31	0.31	0.31	0.00	0.00	0.00	0.00
Papua New Guinea	0.16	0.16	0.16	0.16	0.00	0.00	0.00	0.00
Sri Lanka	0.07	0.07	0.07	0.07	0.00	0.00	0.00	0.00
Thailand	0.07	0.07	0.07	0.07	0.00	0.00	0.00	0.00
Mexico	0.05	0.05	0.05	0.05	0.00	0.00	0.00	0.00
Cote d'Ivoire	0.03	0.03	0.03	0.03	0.00	0.00	0.00	0.00
Malaysia	0.03	0.03	0.03	0.03	0.00	0.00	0.00	0.00
World	6.12	5.92	5.96	5.96	0.00	0.00	0.04	0.68
Oilseed, Palm Kernel								
Indonesia	11.90	12.30	12.40	12.40	0.00	0.00	0.10	0.81
Malaysia	4.56	4.88	4.78	4.78	0.00	0.00	-0.10	-2.05
Nigeria	1.10	1.10	1.10	1.10	0.00	0.00	0.00	0.00
Thailand	0.93	0.98	0.93	0.93	0.00	0.00	-0.05	-5.10
Colombia	0.33	0.34	0.33	0.33	0.00	0.00	-0.01	-2.94
Guatemala	0.19	0.19	0.19	0.19	0.00	0.00	0.00	0.00
Papua New Guinea	0.20	0.18	0.20	0.20	0.00	0.00	0.02	11.11
Brazil	0.16	0.17	0.18	0.18	0.00	0.00	0.02	12.50
Honduras	0.16	0.16	0.16	0.16	0.00	0.00	0.00	0.00
Cameroon	0.15	0.15	0.15	0.15	0.00	0.00	0.00	0.00
World	20.35	21.11	21.09	21.09	0.00	0.00	-0.02	-0.09
Oil, Palm								
Indonesia	45.50	46.70	47.50	47.50	0.00	0.00	0.80	1.71
Malaysia	19.38	20.20	19.60	19.60	0.00	0.00	-0.60	-2.97
Thailand	3.74	3.90	3.72	3.72	0.00	0.00	-0.18	-4.62
Colombia	1.90	2.00	2.00	2.00	0.00	0.00	0.00	0.00
Nigeria	1.50	1.50	1.50	1.50	0.00	0.00	0.00	0.00
Guatemala	0.99	1.00	1.00	1.00	0.00	0.00	0.00	0.00
Papua New Guinea	0.83	0.83	0.85	0.85	0.00	0.00	0.02	2.41
Brazil	0.60	0.66	0.69	0.69	0.00	0.00	0.03	4.55
Cote d'Ivoire	0.63	0.63	0.63	0.63	0.00	0.00	0.00	0.00
Honduras	0.56	0.62	0.60	0.60	0.00	0.00	-0.02	-3.23
World	78.84	81.27	81.36	81.36	0.00	0.00	0.09	0.11

World and Selected Countries and Regions

Table 17 Cotton Area, Yield, and Production

Country / Region	Area (Million hectares)				Yield (Kilograms per hectare)				Production (Million 480 lb. bales)				Change in Production			
	2024/25	Prel. 2025/26	2026/27 Proj.		2024/25	Prel. 2025/26	2026/27 Proj.		2024/25	Prel. 2025/26	2026/27 Proj.		From last month		From last year	
			May	Jun			May	Jun			May	Jun	MBales	Percent	MBales	Percent
World	30.02	29.44	29.24	29.24	866	907	864	864	119.34	122.66	116.04	116.04	0.00	0.00	-6.61	-5.39
United States	3.14	3.17	2.99	2.99	1,000	955	970	970	14.41	13.90	13.30	13.30	0.00	0.00	-0.60	-4.30
Total Foreign	26.88	26.28	26.26	26.26	850	901	852	852	104.93	108.76	102.74	102.74	0.00	0.00	-6.02	-5.53
South Asia																
India	11.48	11.20	11.50	11.50	455	463	454	454	24.00	23.80	24.00	24.00	0.00	0.00	0.20	0.84
Pakistan	2.00	2.00	2.00	2.00	544	577	555	555	5.00	5.30	5.10	5.10	0.00	0.00	-0.20	-3.77
China	2.90	3.05	3.00	3.00	2,402	2,556	2,431	2,431	32.00	35.80	33.50	33.50	0.00	0.00	-2.30	-6.42
South America																
Brazil	1.95	2.17	2.00	2.00	1,903	1,957	1,905	1,905	17.00	19.50	17.50	17.50	0.00	0.00	-2.00	-10.26
Argentina	0.62	0.38	0.52	0.52	501	581	586	586	1.43	1.00	1.40	1.40	0.00	0.00	0.40	40.00
Paraguay	0.07	0.06	0.07	0.07	837	907	933	933	0.25	0.25	0.30	0.30	0.00	0.00	0.05	20.00
Africa																
Burkina Faso	0.35	0.39	0.39	0.39	345	355	355	355	0.55	0.64	0.64	0.64	0.00	0.00	0.00	0.00
Mali	0.62	0.53	0.54	0.54	442	334	381	381	1.27	0.82	0.94	0.94	0.00	0.00	0.12	14.02
Cote d'Ivoire	0.36	0.29	0.31	0.31	360	424	414	414	0.59	0.57	0.59	0.59	0.00	0.00	0.03	4.42
Benin	0.54	0.51	0.51	0.51	487	491	491	491	1.20	1.15	1.15	1.15	0.00	0.00	0.00	0.00
Egypt	0.13	0.10	0.10	0.10	712	708	710	710	0.43	0.33	0.31	0.31	0.00	0.00	-0.02	-4.62
Cameroon	0.23	0.20	0.20	0.20	513	577	577	577	0.54	0.53	0.53	0.53	0.00	0.00	0.00	0.00
Tanzania	0.44	0.44	0.42	0.42	173	198	189	189	0.35	0.40	0.37	0.37	0.00	0.00	-0.04	-8.75
Nigeria	0.27	0.27	0.27	0.27	282	282	282	282	0.35	0.35	0.35	0.35	0.00	0.00	0.00	0.00
Zimbabwe	0.24	0.24	0.24	0.24	195	204	204	204	0.22	0.23	0.23	0.23	0.00	0.00	0.00	0.00
Ethiopia	0.06	0.06	0.06	0.06	713	713	713	713	0.18	0.18	0.18	0.18	0.00	0.00	0.00	0.00
Former Soviet Union - 12																
Uzbekistan	1.00	0.88	0.90	0.90	653	857	798	798	3.00	3.45	3.30	3.30	0.00	0.00	-0.15	-4.21
Turkmenistan	0.50	0.52	0.50	0.50	348	356	348	348	0.80	0.85	0.80	0.80	0.00	0.00	-0.05	-5.88
Tajikistan	0.18	0.18	0.18	0.18	605	641	635	635	0.50	0.53	0.51	0.51	0.00	0.00	-0.02	-3.77
Kazakhstan	0.11	0.15	0.13	0.13	544	522	523	523	0.27	0.35	0.30	0.30	0.00	0.00	-0.05	-14.29
Middle East																
Turkey	0.47	0.40	0.31	0.31	1,850	1,683	1,756	1,756	3.95	3.05	2.50	2.50	0.00	0.00	-0.55	-18.14
Syria	0.03	0.03	0.03	0.03	1,161	1,161	1,161	1,161	0.16	0.16	0.16	0.16	0.00	0.00	0.00	0.00
Iran	0.10	0.10	0.10	0.10	871	871	871	871	0.40	0.40	0.40	0.40	0.00	0.00	0.00	0.00
Australia	0.60	0.47	0.33	0.33	2,032	2,085	2,010	2,010	5.60	4.50	3.00	3.00	0.00	0.00	-1.50	-33.33
Mexico	0.13	0.07	0.08	0.08	1,719	1,709	1,769	1,769	1.00	0.57	0.65	0.65	0.00	0.00	0.09	15.04
Burma	0.19	0.19	0.19	0.19	654	659	659	659	0.57	0.56	0.56	0.56	0.00	0.00	0.00	0.00
Others	1.34	1.42	1.41	1.41	543	539	539	539	3.35	3.52	3.49	3.49	0.00	0.00	-0.02	-0.60

World and Selected Countries and Regions

TABLE 18

The table below presents a record of the June projection and the final estimate. Using world wheat production as an example, the "root mean square error" means that chances are 2 out of 3 that the current forecast will not be above or below the final estimate by more than 3 percent. Chances are 9 out of 10 (90% confidence level) that the difference will not exceed 5 percent. The average difference between the June projection and the final estimate is 16.2 million tons, ranging from 0.4 million to 35.3 million tons. The June projection has been below the estimate 28 times and above 17 times.

RELIABILITY OF PRODUCTION PROJECTIONS 1/

COMMODITY AND REGION	Root mean square error	90 percent confidence interval	Difference between forecast and final estimate				
			Average	Smallest	Largest	Years	
						Below final	Above final
	Percent		---Million metric tons---				
WHEAT							
World	3.0	5.0	16.2	0.4	35.3	28	17
U.S.	6.1	10.3	2.7	0.0	8.4	26	19
Foreign	3.1	5.2	15.2	1.1	33.5	27	17
COARSE GRAINS 2/							
World	3.5	5.9	27.0	0.6	103.3	24	21
U.S.	12.9	21.7	19.4	0.5	103.8	24	21
Foreign	2.6	4.4	14.6	0.4	45.6	22	22
RICE (Milled)							
World	2.3	3.8	6.9	0.3	21.8	29	16
U.S.	7.4	12.5	0.4	0.0	1.1	24	21
Foreign	2.3	3.9	6.8	0.4	21.9	28	16
SOYBEANS							
World	NA	NA	12.1	0.1	36.2	8	14
U.S.	8.8	14.7	4.9	0.0	16.2	22	23
Foreign	NA	NA	9.0	0.2	37.0	8	13
COTTON			---Million 480-lb. bales---				
World	5.8	9.7	4.1	0.0	16.4	24	20
U.S.	12.5	21.0	1.6	0.1	5.7	20	25
Foreign	5.8	9.7	3.2	0.2	12.4	25	19
UNITED STATES			-----Million bushels-----				
<i>CORN</i>	15.2	25.6	755	7	4,010	24	21
<i>SORGHUM</i>	24.3	40.9	82	0	228	22	22
<i>BARLEY</i>	14.5	24.3	25	1	206	17	28
<i>OATS</i>	23.9	40.3	27	1	231	10	35

1/ Marketing years 1981/82 through 2025/26 for grains, soybeans, and cotton. Final for grains, soybeans, and cotton is defined as the first November estimate following the marketing year for 1981/82 through 2024/25, and for 2025/26 the last month's estimate.

2/ Includes corn, sorghum, barley, oats, rye, millet, and mixed grain